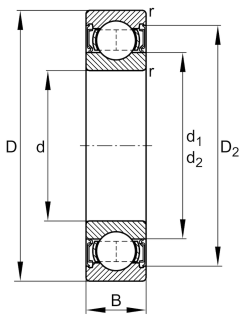


**FAG****61801-2RZ>N**

Deep groove ball bearing

Deep groove ball bearing 618..-2RZ, single row, shields, steel sheet metal cage

## Technical information



## Your current product variant

Version code	>N	Not marked on bearing
Sealing	2RZ	Non-contact seal on both sides
Cage	JN	Steel sheet metal
Tolerance class	PN	Normal (PN)
Dimensional / heat stabilization	SN	Rings dimensional stabilized up to 120°
Lubricant	Lubricating grease	
Radial internal clearance	CN (Group N)	Normal internal clearance
Bore type	Z	Cylindrical

## Main Dimensions &amp; Performance Data

d	12 mm	Bore diameter
D	21 mm	Outside diameter
B	5 mm	Width
$C_r$	2.040 N	Basic dynamic load rating, radial
$C_{0r}$	1.040 N	Basic static load rating, radial
$C_{ur}$	65 N	Fatigue load limit, radial
$n_G$	42.500 1/min	Limiting speed
$n_{gr}$	23.500 1/min	Reference speed
$m$	0,006 kg	Weight



### Mounting dimensions

$d_{a \min}$	14 mm	Minimum diameter shaft shoulder
$D_{a \max}$	19 mm	Maximum diameter of housing shoulder
$r_{a \max}$	0,3 mm	Maximum fillet radius

### Dimensions

$r_{\min}$	0,3 mm	Minimum chamfer dimension
$D_1$	18,4 mm	Shoulder diameter outer ring
$D_2$	19,2 mm	Caliber diameter outer ring
$d_1$	14,8 mm	Shoulder diameter inner ring

### Temperature range

$T_{\min}$	-30 °C	Operating temperature min.
$T_{\max}$	120 °C	Operating temperature max.

### Calculation factors

$f_0$	15,3	Calculation factor
-------	------	--------------------

### Characteristics

-  Radial load
-  Axial load in one direction
-  Axial load in two directions
-  Lifetime lubrication, freedom from maintenance
-  Grease Lubrication
-  Sealed on both sides