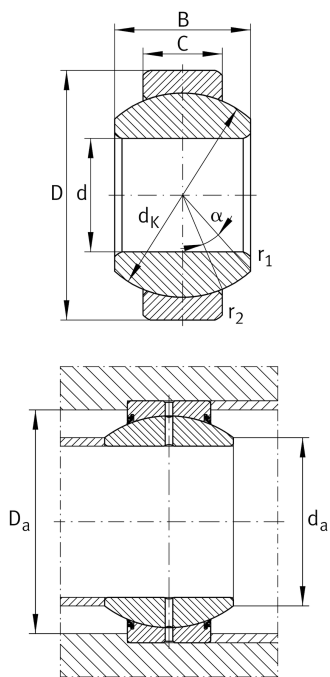


**GE160-FO**

Spherical plain bearing

High performance radial spherical plain bearing, requiring maintenance, sliding contact surface: steel/steel; DIN ISO 12240-1, dimension series G, open design

Technical information



Your current product variant

Maintenance	Maintenance required	
Material	Steel	
Sealing	Without	
Radial internal clearance	CN (Group N)	Normal internal clearance
Coating	Durotect M	Inner- and outer ring coated with Durotect M (Manganese Phosphate)

Main Dimensions & Performance Data

d	160 mm	Bore diameter bearing
D	260 mm	Outside diameter bearing
B	135 mm	Width inner ring
C_r	1.990.000 N	Basic dynamic load rating, radial
C_{0r}	7.650.000 N	Basic static load rating, radial
$\approx m$	24 kg	Weight

Mounting dimensions

$r_{1\text{min}}$	1 mm	Edge Spacing
$r_{2\text{min}}$	1,1 mm	Edge Spacing
$d_{a\text{max}}$	180 mm	Connection measure Inner ring
$D_{a\text{min}}$	219 mm	Housing Connection Diameter








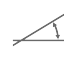

Dimensions

C	80 mm	Width Outer ring
d_K	225 mm	Ball diameter
α	16 °	Tilt angle
d_{OT}	0 mm	Bore diameter bearing, upper tolerance
d_{UT}	-0,025 mm	Bore diameter bearing, lower tolerance
D_{OT}	0 mm	Outside diameter, upper tolerance
D_{UT}	-0,035 mm	Outside diameter, lower tolerance
B_{OT}	0 mm	Width inner ring, upper tolerance
B_{UT}	-0,25 mm	Width inner ring, lower tolerance
C_{OT}	0 mm	Width outer ring, upper tolerance
C_{UT}	-0,7 mm	Width outer ring, lower tolerance
G_r	0,1 - 0,192	Radial Clearance
G_{rmax}	0,192 mm	Radial clearance, maximum
G_{rmin}	0,1 mm	Radial clearance, minimum

Temperature range

T_{min}	-60 °C	Operating temperature min.
T_{max}	200 °C	Operating temperature max.

Characteristics

	Radial load
	Axial load in one direction
	Axial load in two directions
	Grease Lubrication
	Not sealed
	Static angular error and misalignment
	Dynamic angular error and misalignment