

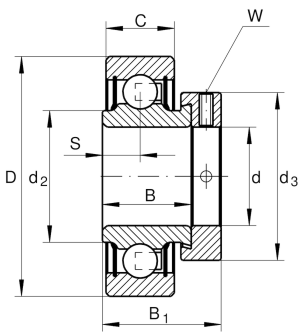
**RAE30-XL-NPP-L319** [↗](#)

Radial insert ball bearing

Radial insert ball bearing RAE...XL-NPP

X-life

Technical information



Your current product variant

Lubricant	L319	Grease (L319)
-----------	------	---------------

Main Dimensions & Performance Data

d	30 mm	Bore diameter
D	62 mm	Outside diameter
B	23,8 mm	Width
B ₁	35,8 mm	Locking collar total width
C _r	19.500 N	Basic dynamic load rating, radial
C _{0r}	11.300 N	Basic static load rating, radial
C _{ur}	480 N	Fatigue load limit, radial
≈m	0,325 kg	Weight

Dimensions

C	18 mm	Width, outer ring
S	9 mm	Distance raceway
d ₂	37,4 mm	Rib diameter sealing inner ring
d ₃	44 mm	Outside diameter locking collar/locknut
W	4 mm	Width of flats




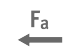
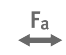



Temperature range

T_{min}	-20 °C	Operating temperature min.
T_{max}	120 °C	Operating temperature max.

Calculation factors

f_0	13,8	Calculation factor
-------	------	--------------------

Characteristics

-  Radial load
-  Axial load in one direction
-  Axial load in two directions
-  Lifetime lubrication, freedom from maintenance
-  Grease Lubrication
-  Sealed on both sides