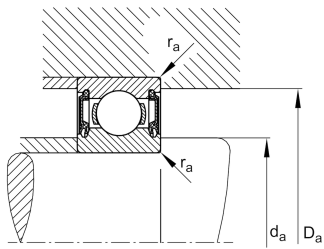
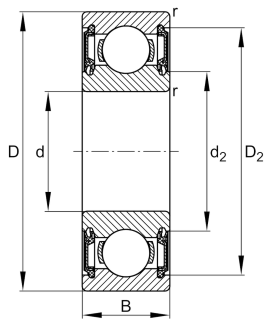


**FAG****6310-H-2RSR-SN-C3>N**

Deep groove ball bearing

Deep groove ball bearing 63...H-2RSR, single row, H-Series, seals, steel sheet metal cage

Technical information



Your current product variant

Version code	>N	Not marked on bearing
Changed internal design	H	Design variant H (H-Series)
Type of Seal	2RSR	Contact seal on both sides
Cage	JN	Steel sheet metal
Tolerance class	PN	Normal (PN)
Dimensional / heat stabilization	SN	Rings dimensional stabilized up to 120°
Lubricant	Lubricating grease	
Radial internal clearance	C3 (Group 3)	Internal clearance larger than CN
Bore type	Z	Cylindrical

Main Dimensions & Performance Data

d	50 mm	Bore diameter
D	110 mm	Outside diameter
B	27 mm	Width
C _r	57.540 N	Basic dynamic load rating, radial
C _{0r}	35.340 N	Basic static load rating, radial
C _{ur}	2.150 N	Fatigue load limit, radial
n _G	4.000 1/min	Limiting speed
≈m	1,04 kg	Weight



Mounting dimensions

$d_{a \min}$	61 mm	Minimum diameter shaft shoulder
$D_{a \max}$	99 mm	Maximum diameter of housing shoulder
$r_{a \max}$	2 mm	Maximum fillet radius

Dimensions

r_{\min}	2 mm	Minimum chamfer dimension
D_1	91,9 mm	Shoulder diameter outer ring
D_2	96,9 mm	Caliber diameter outer ring
d_1	69,1 mm	Shoulder diameter inner ring

Temperature range

T_{\min}	-20 °C	Operating temperature min.
T_{\max}	100 °C	Operating temperature max.

Calculation factors

f_0	13,3	Calculation factor
-------	------	--------------------

Characteristics

-  F_r Radial load
-  F_a Axial load in one direction
-  F_a Axial load in two directions
-  L_h Lifetime lubrication, freedom from maintenance
-  Grease Lubrication
-  Sealed on both sides