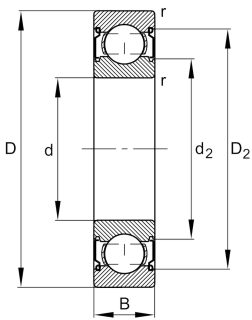


**FAG****6207-C-Z-C3>V**

## Deep groove ball bearing

Deep groove ball bearing 62...-C-Z, single row, Generation C, shield, steel sheet metal cage

## Technical information



## Your current product variant

Version code	>V	Not marked on bearing
Changed internal design	C	GenerationC
Sealing	Z	Non-contact shield on one Side
Cage	JN	Steel sheet metal
Tolerance class	P6	Class 6 (ISO 492:2023)
Dimensional / heat stabilization	SN	Rings dimensional stabilized up to 120°
Lubricant	Without	Bearing not greased
Radial internal clearance	C3 (Group 3)	Internal clearance larger than CN
Bore type	Z	Cylindrical

## Main Dimensions &amp; Performance Data

d	35 mm	Bore diameter
D	72 mm	Outside diameter
B	17 mm	Width
C <sub>r</sub>	29.500 N	Basic dynamic load rating, radial
C <sub>0r</sub>	15.400 N	Basic static load rating, radial
C <sub>ur</sub>	1.060 N	Fatigue load limit, radial
n <sub>G</sub>	15.000 1/min	Limiting speed
n <sub>gr</sub>	11.300 1/min	Reference speed
≈m	0,261 kg	Weight



### Mounting dimensions

$d_{a \min}$	42 mm	Minimum diameter shaft shoulder
$D_{a \max}$	65 mm	Maximum diameter of housing shoulder
$r_{a \max}$	1 mm	Maximum fillet radius

### Dimensions

$r_{\min}$	1,1 mm	Minimum chamfer dimension
$D_1$	61,56 mm	Shoulder diameter outer ring
$D_2$	64,51 mm	Caliber diameter outer ring
$d_1$	46,89 mm	Shoulder diameter inner ring
$d_2$	44,61 mm	Caliber diameter inner ring

### Temperature range

$T_{\min}$	-30 °C	Operating temperature min.
$T_{\max}$	120 °C	Operating temperature max.

### Calculation factors

$f_0$	13,9	Calculation factor
-------	------	--------------------

### Characteristics

	Radial load
	Axial load in one direction
	Axial load in two directions
	Grease Lubrication
	Oil Lubrication
	Sealed on one side