

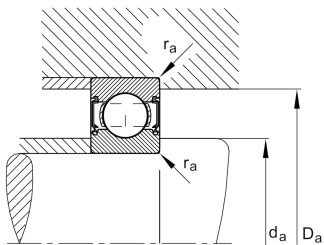
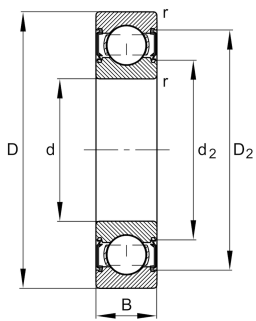
**FAG****6204-C-2Z-N>V**

## Deep groove ball bearing



Deep groove ball bearing 62...-C-2Z-N, single row, Generation C, shields, ring groove, steel sheet metal cage

## Technical information



## Your current product variant

Version code	>V	Not marked on bearing
Changed internal design	C	GenerationC
Sealing	2Z	Non-contact shield on both sides
Design, bearing outer ring	N	Ring groove for snap ring
Cage	JN	Steel sheet metal
Tolerance class	P6	Class 6 (ISO 492:2023)
Dimensional / heat stabilization	SN	Rings dimensional stabilized up to 120°
Lubricant	GA14	Ball bearing grease, low noise
Radial internal clearance	CN (Group N)	Normal internal clearance
Bore type	Z	Cylindrical



### Main Dimensions & Performance Data

d	20 mm	Bore diameter
D	47 mm	Outside diameter
B	14 mm	Width
C <sub>r</sub>	14.700 N	Basic dynamic load rating, radial
C <sub>0r</sub>	6.600 N	Basic static load rating, radial
C <sub>ur</sub>	455 N	Fatigue load limit, radial
n <sub>G</sub>	20.600 1/min	Limiting speed
n <sub>gr</sub>	18.100 1/min	Reference speed
m	0,103 kg	Weight

### Mounting dimensions

d <sub>a min</sub>	25,6 mm	Minimum diameter shaft shoulder
D <sub>a max</sub>	41,4 mm	Maximum diameter of housing shoulder
r <sub>a max</sub>	1 mm	Maximum fillet radius

### Dimensions

r <sub>min</sub>	1 mm	Minimum chamfer dimension
D <sub>1</sub>	39,06 mm	Shoulder diameter outer ring
D <sub>2</sub>	41 mm	Caliber diameter outer ring
d <sub>1</sub>	27,94 mm	Shoulder diameter inner ring
d <sub>2</sub>	26,77 mm	Caliber diameter inner ring

### Temperature range

T <sub>min</sub>	-20 °C	Operating temperature min.
T <sub>max</sub>	120 °C	Operating temperature max.

### Calculation factors

f <sub>0</sub>	13,1	Calculation factor
----------------	------	--------------------



### Characteristics

---



Radial load



Axial load in one direction



Axial load in two directions



Lifetime lubrication, freedom from maintenance



Grease Lubrication



Sealed on both sides