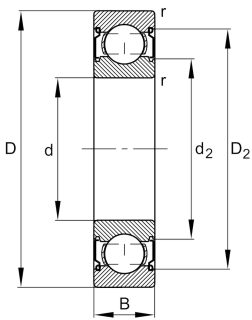


**FAG****6308-C-2Z-L138-C3>V**

Deep groove ball bearing

Deep groove ball bearing 63...-C-2Z, single row, Generation C, shields, steel sheet metal cage

Technical information



Your current product variant

Version code	>V	Not marked on bearing
Changed internal design	C	GenerationC
Sealing	2Z	Non-contact shield on both sides
Cage	JN	Steel sheet metal
Tolerance class	P6	Class 6 (ISO 492:2023)
Dimensional / heat stabilization	SN	Rings dimensional stabilized up to 120°
Lubricant	L138	Grease (L138/customer specific)
Radial internal clearance	C3 (Group 3)	Internal clearance larger than CN
Bore type	Z	Cylindrical

Main Dimensions & Performance Data

d	40 mm	Bore diameter
D	90 mm	Outside diameter
B	23 mm	Width
C_r	50.000 N	Basic dynamic load rating, radial
C_{0r}	25.000 N	Basic static load rating, radial
C_{ur}	1.730 N	Fatigue load limit, radial
n_G	10.100 1/min	Limiting speed
n_{gr}	9.900 1/min	Reference speed
$\approx m$	0,621 kg	Weight



Mounting dimensions

$d_{a \min}$	49 mm	Minimum diameter shaft shoulder
$D_{a \max}$	81 mm	Maximum diameter of housing shoulder
$r_{a \max}$	1,5 mm	Maximum fillet radius

Dimensions

r_{\min}	1,5 mm	Minimum chamfer dimension
D_1	75,54 mm	Shoulder diameter outer ring
D_2	78,61 mm	Caliber diameter outer ring
d_1	55,08 mm	Shoulder diameter inner ring
d_2	52,28 mm	Caliber diameter inner ring

Temperature range

T_{\min}	-30 °C	Operating temperature min.
T_{\max}	120 °C	Operating temperature max.

Calculation factors

f_0	13	Calculation factor
-------	----	--------------------

Characteristics

	Radial load
	Axial load in one direction
	Axial load in two directions
	Lifetime lubrication, freedom from maintenance
	Grease Lubrication
	Sealed on both sides