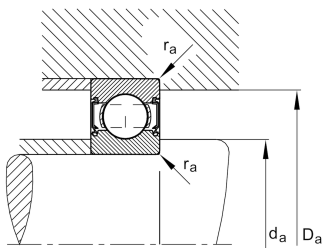
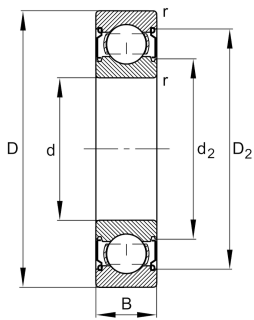


**FAG****6211-C-2Z-C3>V**

Deep groove ball bearing

Deep groove ball bearing 62...-C-2Z, single row, Generation C, shields, steel sheet metal cage

Technical information



Your current product variant

| | | |
|----------------------------------|--------------|---|
| Version code | >V | Not marked on bearing |
| Changed internal design | C | GenerationC |
| Sealing | 2Z | Non-contact shield on both sides |
| Cage | JN | Steel sheet metal |
| Tolerance class | P6 | Class 6 (ISO 492:2023) |
| Dimensional / heat stabilization | S0 | Rings dimensional stabilized up to 150° |
| Lubricant | GA13 | Ball bearing and insert bearing grease |
| Radial internal clearance | C3 (Group 3) | Internal clearance larger than CN |
| Bore type | Z | Cylindrical |

Main Dimensions & Performance Data

| | | |
|-------------|-------------|-----------------------------------|
| d | 55 mm | Bore diameter |
| D | 100 mm | Outside diameter |
| B | 21 mm | Width |
| C_r | 50.000 N | Basic dynamic load rating, radial |
| C_{0r} | 29.000 N | Basic static load rating, radial |
| C_{ur} | 2.020 N | Fatigue load limit, radial |
| n_G | 8.800 1/min | Limiting speed |
| n_{gr} | 8.300 1/min | Reference speed |
| $\approx m$ | 0,595 kg | Weight |



Mounting dimensions

| | | |
|--------------|--------|--------------------------------------|
| $d_{a \min}$ | 64 mm | Minimum diameter shaft shoulder |
| $D_{a \max}$ | 91 mm | Maximum diameter of housing shoulder |
| $r_{a \max}$ | 1,5 mm | Maximum fillet radius |

Dimensions

| | | |
|------------|----------|------------------------------|
| r_{\min} | 1,5 mm | Minimum chamfer dimension |
| D_1 | 86,95 mm | Shoulder diameter outer ring |
| D_2 | 89,72 mm | Caliber diameter outer ring |
| d_1 | 68,62 mm | Shoulder diameter inner ring |
| d_2 | 66,69 mm | Caliber diameter inner ring |

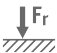
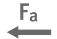




Temperature range

| | | |
|------------|--------|----------------------------|
| T_{\min} | -20 °C | Operating temperature min. |
| T_{\max} | 120 °C | Operating temperature max. |

Calculation factors

| | | |
|-------|------|--------------------|
| f_0 | 14,2 | Calculation factor |
|-------|------|--------------------|

Characteristics

| | |
|---|--|
|  | Radial load |
|  | Axial load in one direction |
|  | Axial load in two directions |
|  | Lifetime lubrication, freedom from maintenance |
|  | Grease Lubrication |
|  | Sealed on both sides |