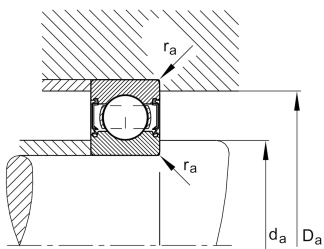
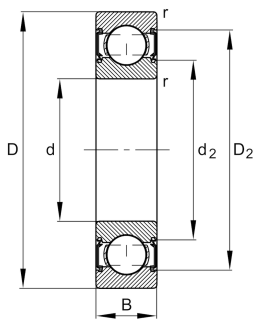


**FAG****HC6309-C-2HRS-L207-C3>V**

Deep groove ball bearing

Deep groove ball bearing HC63...-C-2HRS,
Hybrid bearing, single row, Generation C,
seals, steel sheet metal cage

Technical information



Your current product variant

Version code	>V	Not marked on bearing
Material Bearing	HC	Hybrid bearing, rolling elements ceramic, bearing rings made of steel
Changed internal design	C	GenerationC
Sealing	2HRS	Contact seal on both sides
Cage	JN	Steel sheet metal
Tolerance class	P6	Class 6 (ISO 492:2023)
Dimensional / heat stabilization	S0	Rings dimensional stabilized up to 150°
Lubricant	L207	Low noise high-temperature grease, interchangeable with grease L069
Radial internal clearance	C3 (Group 3)	Internal clearance larger than CN
Bore type	Z	Cylindrical

Main Dimensions & Performance Data

d	45 mm	Bore diameter
D	100 mm	Outside diameter
B	25 mm	Width
C _r	62.000 N	Basic dynamic load rating, radial
C _{0r}	30.500 N	Basic static load rating, radial
C _{ur}	1.590 N	Fatigue load limit, radial
n _G	6.400 1/min	Limiting speed
≈m	0,719 kg	Weight



Mounting dimensions

$d_{a \min}$	54 mm	Minimum diameter shaft shoulder
$D_{a \max}$	91 mm	Maximum diameter of housing shoulder
$r_{a \max}$	1,5 mm	Maximum fillet radius

Dimensions

r_{\min}	1,5 mm	Minimum chamfer dimension
D_1	83,6 mm	Shoulder diameter outer ring
D_2	86,37 mm	Caliber diameter outer ring
d_1	62,25 mm	Shoulder diameter inner ring
d_2	60,33 mm	Caliber diameter inner ring


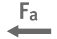





Temperature range

T_{\min}	-30 °C	Operating temperature min.
T_{\max}	100 °C	Operating temperature max.

Calculation factors

f_0	12,5	Calculation factor
-------	------	--------------------

Characteristics

	Radial load
	Axial load in one direction
	Axial load in two directions
	Lifetime lubrication, freedom from maintenance
	Grease Lubrication
	Sealed on both sides
	Current insulated