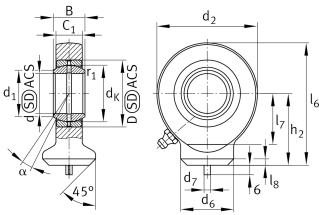


**GK20-DO**

Rod end

Hydraulic rod end according to ISO24652 and DIN ISO 12240-4, dimension series E, form S with circular weld end, maintenance required, sliding pair steel/steel, open

Technical information

**Your current product variant**

Clampable	Not clampable
Maintenance	Maintenance required
Mounting	Weldable, round
Lubrication nipple	Lubrication hole
Slotted	No

Main Dimensions & Performance Data

C_r	38.500 N	Basic dynamic load rating, radial
C_{0r}	53.700 N	Basic static load rating, radial
d	20 mm	Bore diameter bearing
d ₂	53 mm	Outer eye diameter
l ₆	64,5 mm	Total length welding head
D	35 mm	Outside diameter bearing
B	16 mm	Width inner ring,
≈m	0,26 kg	Weight



Dimensions

α	9 °	Tilt angle
C ₁	13 mm	Width of the rod end
d _K	29 mm	Ball diameter
d ₆	27,5 mm	Welding Shank Diameter
d ₇	4 mm	Centering pin diameter
h ₂	38 mm	Shank Length Welding Head
l ₇	26,8 mm	Distance drilling with/shaft start
l ₈	2 mm	Chamfer
d _{UT}	-0,01 mm	Bore diameter bearing, lower tolerance
d _{OT}	0 mm	Bore diameter bearing, upper tolerance
B _{UT}	-0,12 mm	Width inner ring, lower tolerance
B _{OT}	0 mm	Width inner ring, upper tolerance
G _{rmax}	0,082 mm	Radial clearance, maximum
G _{rmin}	0,03 mm	Radial clearance, minimum
G _r	0,03 - 0,082 mm	Radial Clearance

Mounting dimensions

r _{1smin}	0,3 mm	Edge Spacing
d ₁	24,2 mm	Outer flange diameter inner ring

Temperature range

T _{min}	-60 °C	Operating temperature min.
T _{max}	200 °C	Operating temperature max.



Characteristics



Radial load



Axial load in one direction



Axial load in two directions



Grease Lubrication



Not sealed



Static angular error and misalignment



Dynamic angular error and misalignment