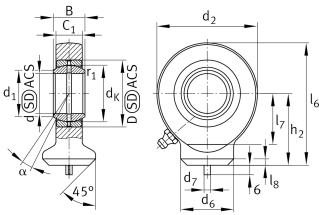


**GK80-DO**

Rod end

Hydraulic rod end according to ISO24652 and DIN ISO 12240-4, dimension series E, form S with circular weld end, maintenance required, sliding pair steel/steel, open

Technical information

**Your current product variant**

Clampable	Not clampable
Maintenance	Maintenance required
Mounting	Weldable, round
Lubrication nipple	DIN71412-AS6 (tapered grease nipple)
Slotted	No

Main Dimensions & Performance Data

C_r	522.000 N	Basic dynamic load rating, radial
C_{0r}	624.000 N	Basic static load rating, radial
d	80 mm	Bore diameter bearing
d_2	180 mm	Outer eye diameter
l_6	231 mm	Total length welding head
D	120 mm	Outside diameter bearing
B	55 mm	Width inner ring,
$\approx m$	10,8 kg	Weight



Dimensions

α	6 °	Tilt angle
C ₁	47 mm	Width of the rod end
d _K	105 mm	Ball diameter
d ₆	95 mm	Welding Shank Diameter
d ₇	6 mm	Centering pin diameter
h ₂	141 mm	Shank Length Welding Head
l ₇	100 mm	Distance drilling with/shaft start
l ₈	10 mm	Chamfer
d _{UT}	-0,015 mm	Bore diameter bearing, lower tolerance
d _{OT}	0 mm	Bore diameter bearing, upper tolerance
B _{UT}	-0,15 mm	Width inner ring, lower tolerance
B _{OT}	0 mm	Width inner ring, upper tolerance
G _{rmax}	0,142 mm	Radial clearance, maximum
G _{rmin}	0,055 mm	Radial clearance, minimum
G _r	0,055 - 0,142 mm	Radial Clearance

Mounting dimensions

r _{1smin}	1 mm	Edge Spacing
d ₁	89,4 mm	Outer flange diameter inner ring

Temperature range

T _{min}	-60 °C	Operating temperature min.
T _{max}	200 °C	Operating temperature max.



Characteristics



Radial load



Axial load in one direction



Axial load in two directions



Grease Lubrication



Not sealed



Static angular error and misalignment



Dynamic angular error and misalignment