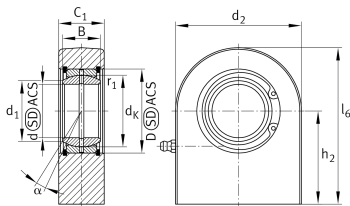


**GF70-DO** [↗](#)

Rod end

Hydraulic rod end, with rectangular welding face, requiring maintenance, sliding contact surface: steel/steel, open design

Technical information

**Your current product variant**

Clampable	Not clampable
Maintenance	Maintenance required
Mounting	Weldable, rectangular
Lubrication nipple	DIN71412-AM6 (tapered grease nipple)
Slotted	No
Type of Seal	Without

Main Dimensions & Performance Data

C_r	407.000 N	Basic dynamic load rating, radial
C_{0r}	725.000 N	Basic static load rating, radial
d	70 mm	Bore diameter bearing
d_2	164 mm	Outer eye diameter
l_6	197 mm	Total length welding head
D	105 mm	Outside diameter bearing
B	49 mm	Width inner ring
$\approx m$	10,3 kg	Weight



Dimensions

d_K	92 mm	Ball diameter
α	6 °	Tilt angle
C_1	55 mm	Width of the rod end
$C_{1 \max}$	56 mm	Width of the rod end, max.
h_2	115 mm	Shank Length Welding Head
d_{UT}	-0,015 mm	Bore diameter bearing, lower tolerance
d_{OT}	0 mm	Bore diameter bearing, upper tolerance
B_{UT}	-0,15 mm	Width inner ring, lower tolerance
B_{OT}	0 mm	Width inner ring, upper tolerance
G_r	0,055-0,142	Radial Clearance
$G_{r\max}$	0,142 mm	Radial clearance, maximum
$G_{r\min}$	0,055 mm	Radial clearance, minimum

Mounting dimensions

$r_{1\min}$	1 mm	Edge Spacing
d_1	77,9 mm	Outer flange diameter inner ring

Temperature range

T_{\min}	-60 °C	Operating temperature min.
T_{\max}	200 °C	Operating temperature max.



Characteristics



Radial load



Axial load in one direction



Axial load in two directions



Grease Lubrication



Not sealed



Static angular error and misalignment



Dynamic angular error and misalignment