

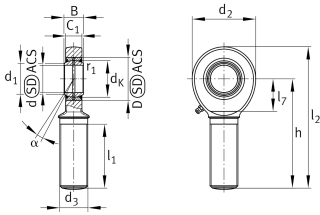
**GAR60-DO-2RS**

Rod end



Rod end with external thread, right hand thread, requiring maintenance, sliding contact surface: steel/steel, DIN ISO 12240-4, dimension series E, type M, sealed design

Technical information



Your current product variant

Clampable	Not clampable	
Maintenance	Maintenance required	
Mounting	External thread	
Lubrication nipple	DIN71412-AM6 (tapered grease nipple)	
Slotted	No	
Thread Pitch	Right-hand thread	
Sealing	2RS	Lip seals on both sides
Radial internal clearance	CN (Group N)	Normal internal clearance

Main Dimensions & Performance Data

C_r	318.000 N	Basic dynamic load rating, radial
C_{0r}	405.000 N	Basic static load rating, radial
d	60 mm	Bore diameter bearing
D	90 mm	Outside diameter bearing
l_2	277,5 mm	Total length external thread head
B	44 mm	Width inner ring
d_2	135 mm	Outer eye diameter
$\approx m$	5,94 kg	Weight



Mounting dimensions

d ₁	66,8 mm	Outer flange diameter inner ring
r _{1smin}	1 mm	Edge Spacing

Dimensions

d _K	80 mm	Ball diameter
d ₃	M52x3	Thread size
h	210 mm	Shank Length External thread rod
C ₁	38 mm	Width of the rod end
α	6 °	Tilt angle
l ₁	115 mm	Shank Length External thread head
l ₇	75 mm	Distance drilling with/shaft start
d _{OT}	0 mm	Bore diameter bearing, upper tolerance
d _{UT}	-0,015 mm	Bore diameter bearing, lower tolerance
d _T	0,015	Bore diameter bearing, tolerance
B _{OT}	0 mm	Width inner ring, upper tolerance
B _{UT}	-0,15 mm	Width inner ring, lower tolerance
G _r	0,043-0,12 mm	Radial Clearance
G _{rmax}	0,12 mm	Radial clearance, maximum
G _{rmin}	0,043 mm	Radial clearance, minimum

Temperature range

T _{min}	-30 °C	Operating temperature min.
T _{max}	130 °C	Operating temperature max.



Characteristics



Radial load



Axial load in one direction



Axial load in two directions



Grease Lubrication



Sealed on both sides



Static angular error and misalignment



Dynamic angular error and misalignment