

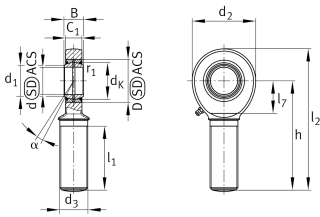
**GAL60-DO-2RS** [🔗](#)

## Rod end



Rod end with external thread, left hand thread, requiring maintenance, sliding contact surface: steel/steel, DIN ISO 12240-4, dimension series E, type M, sealed design

## Technical information

**Your current product variant**

Clampable	Not clampable	
Maintenance	Maintenance required	
Mounting	External thread	
Lubrication nipple	DIN71412-AM6 (tapered grease nipple)	
Slotted	No	
Thread Pitch	Left-hand thread	
Sealing	2RS	Lip seals on both sides
Radial internal clearance	CN (Group N)	Normal internal clearance

**Main Dimensions & Performance Data**

$C_r$	318.000 N	Basic dynamic load rating, radial
$C_{0r}$	405.000 N	Basic static load rating, radial
d	60 mm	Bore diameter bearing
D	90 mm	Outside diameter bearing
$l_2$	277,5 mm	Total length external thread head
B	44 mm	Width inner ring
$d_2$	135 mm	Outer eye diameter
$\approx m$	5,96 kg	Weight



### Mounting dimensions

d <sub>1</sub>	66,8 mm	Outer flange diameter inner ring
r <sub>1smin</sub>	1 mm	Edge Spacing

### Dimensions

d <sub>K</sub>	80 mm	Ball diameter
d <sub>3</sub>	M52x3	Thread size
h	210 mm	Shank Length External thread rod
C <sub>1</sub>	38 mm	Width of the rod end
α	6 °	Tilt angle
l <sub>1</sub>	115 mm	Shank Length External thread head
l <sub>7</sub>	75 mm	Distance drilling with/shaft start
d <sub>OT</sub>	0 mm	Bore diameter bearing, upper tolerance
d <sub>UT</sub>	-0,015 mm	Bore diameter bearing, lower tolerance
B <sub>OT</sub>	0 mm	Width inner ring, upper tolerance
B <sub>UT</sub>	-0,15 mm	Width inner ring, lower tolerance
G <sub>r</sub>	0.043-0.12 mm	Radial Clearance
G <sub>rmax</sub>	0,12 mm	Radial clearance, maximum
G <sub>rmin</sub>	0,043 mm	Radial clearance, minimum

### Temperature range

T <sub>min</sub>	-30 °C	Operating temperature min.
T <sub>max</sub>	130 °C	Operating temperature max.



### Characteristics

---



Radial load



Axial load in one direction



Axial load in two directions



Grease Lubrication



Sealed on both sides



Static angular error and misalignment



Dynamic angular error and misalignment