

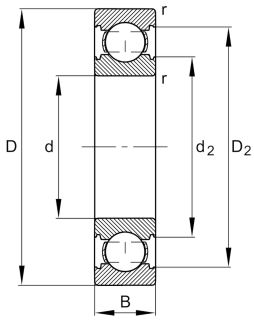
**FAG****6308-C-N>V**

Deep groove ball bearing



Deep groove ball bearing 63...-C-N, single row, Generation C, steel sheet metal cage, ring groove

Technical information

**Your current product variant**

Version code	>V	Not marked on bearing
Changed internal design	C	GenerationC
Sealing	Without	Not sealed
Design, bearing outer ring	N	Ring groove for snap ring
Cage	JN	Steel sheet metal
Tolerance class	P6	Class 6 (ISO 492:2023)
Dimensional / heat stabilization	SN	Rings dimensional stabilized up to 120°
Lubricant	Without	Bearing not greased
Radial internal clearance	CN (Group N)	Normal internal clearance
Bore type	Z	Cylindrical



Main Dimensions & Performance Data

d	40 mm	Bore diameter
D	90 mm	Outside diameter
B	23 mm	Width
C _r	50.000 N	Basic dynamic load rating, radial
C _{0r}	25.000 N	Basic static load rating, radial
C _{ur}	1.730 N	Fatigue load limit, radial
n _G	11.800 1/min	Limiting speed
n _{gr}	9.900 1/min	Reference speed
m	0,596 kg	Weight

Mounting dimensions

d _{a min}	49 mm	Minimum diameter shaft shoulder
D _{a max}	81 mm	Maximum diameter of housing shoulder
r _{a max}	1,5 mm	Maximum fillet radius

Dimensions

r _{min}	1,5 mm	Minimum chamfer dimension
D ₁	75,54 mm	Shoulder diameter outer ring
D ₂	78,61 mm	Caliber diameter outer ring
d ₁	55,08 mm	Shoulder diameter inner ring
d ₂	52,28 mm	Caliber diameter inner ring

Temperature range

T _{min}	-30 °C	Operating temperature min.
T _{max}	120 °C	Operating temperature max.

Calculation factors

f ₀	13	Calculation factor
----------------	----	--------------------



Characteristics



Radial load



Axial load in one direction



Axial load in two directions



Grease Lubrication



Oil Lubrication



Not sealed