

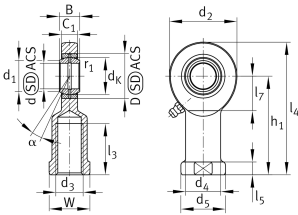
**GU25-DO**

Rod end

Rod end GU..-DO



Technical information

**Your current product variant**

Clampable	Not clampable
Maintenance	Maintenance required
Mounting	No thread
Lubrication nipple	DIN71412-AM6 (tapered grease nipple)
Slotted	No
Type of Seal	Without

Main Dimensions & Performance Data

d	25 mm	Bore diameter bearing
D	42 mm	Outside diameter bearing
B	20 mm	Width inner ring,
C _r	62.800 N	Basic dynamic load rating, radial
C _{0r}	88.300 N	Basic static load rating, radial
≈m	0,85 kg	Weight



Dimensions

d_K	35,5 mm	Ball diameter
d_1	29,3 mm	Outer flange diameter inner ring
d_2	64 mm	Outer eye diameter
d_4	33,5 mm	Shank diameter
h_1	95,5 mm	Shank Length Internal thread head
C_1	17 mm	Width of the rod end
α	7 °	Tilt angle
l_4	127,5 mm	Total length internal thread head
l_7	32 mm	Distance drilling with/shaft start
d_5	42 mm	Shank diameter, large
r_{1smin}	0,6 mm	Edge Spacing
G_r	0,037 - 0,100	Radial Clearance
d_{OT}	0 mm	Bore diameter bearing, upper tolerance
d_{UT}	-0,01 mm	Bore diameter bearing, lower tolerance
B_{OT}	0 mm	Width inner ring, upper tolerance
B_{UT}	-0,12 mm	Width inner ring, lower tolerance
G_{rmax}	0,1 mm	Radial clearance, maximum
G_{rmin}	0,037 mm	Radial clearance, minimum

Temperature range

T_{min}	-60 °C	Operating temperature min.
T_{max}	200 °C	Operating temperature max.



Characteristics



Radial load



Axial load in one direction



Axial load in two directions



Grease Lubrication



Not sealed



Protected against rust



Static angular error and misalignment



Dynamic angular error and misalignment