

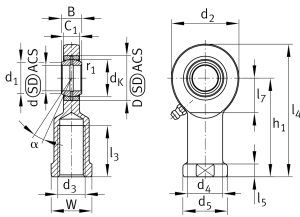
**GU30-DO**

Rod end

Rod end GU..-DO



## Technical information

**Your current product variant**

Clampable	Not clampable
Maintenance	Maintenance required
Mounting	No thread
Lubrication nipple	DIN71412-AM6 (tapered grease nipple)
Slotted	No
Sealing	Without

**Main Dimensions & Performance Data**

d	30 mm	Bore diameter bearing
D	47 mm	Outside diameter bearing
B	22 mm	Width inner ring,
C <sub>r</sub>	81.000 N	Basic dynamic load rating, radial
C <sub>0r</sub>	117.000 N	Basic static load rating, radial
≈m	1,3 kg	Weight



## Dimensions

$d_K$	40,7 mm	Ball diameter
$d_1$	34,2 mm	Outer flange diameter inner ring
$d_2$	73 mm	Outer eye diameter
$d_4$	40 mm	Shank diameter
$h_1$	111,5 mm	Shank Length Internal thread head
$C_1$	19 mm	Width of the rod end
$\alpha$	6 °	Tilt angle
$l_4$	148 mm	Total length internal thread head
$l_7$	37 mm	Distance drilling with/shaft start
$d_5$	50 mm	Shank diameter, large
$r_{1smin}$	0,6 mm	Edge Spacing
$G_r$	0,037 - 0,100	Radial Clearance
$d_{OT}$	0 mm	Bore diameter bearing, upper tolerance
$d_{UT}$	-0,01 mm	Bore diameter bearing, lower tolerance
$B_{OT}$	0 mm	Width inner ring, upper tolerance
$B_{UT}$	-0,12 mm	Width inner ring, lower tolerance
$G_{rmax}$	0,1 mm	Radial clearance, maximum
$G_{rmin}$	0,037 mm	Radial clearance, minimum



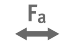



## Temperature range

$T_{min}$	-60 °C	Operating temperature min.
$T_{max}$	200 °C	Operating temperature max.



### Characteristics

---

-  Radial load
-  Axial load in one direction
-  Axial load in two directions
-  Grease Lubrication
-  Not sealed
-  Protected against rust
-  Static angular error and misalignment
-  Dynamic angular error and misalignment