

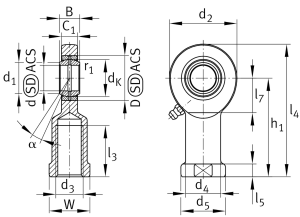
**GU35-DO**

Rod end

Rod end GU..-DO



Technical information

**Your current product variant**

Clampable	Not clampable
Maintenance	Maintenance required
Mounting	Weldable, rectangular
Lubrication nipple	DIN71412-AM6 (tapered grease nipple)
Slotted	No
Sealing	Without

Main Dimensions & Performance Data

d	35 mm	Bore diameter bearing
D	55 mm	Outside diameter bearing
B	25 mm	Width inner ring,
C _r	104.000 N	Basic dynamic load rating, radial
C _{0r}	134.000 N	Basic static load rating, radial
≈m	1,9 kg	Weight



Dimensions



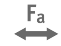





d_K	47 mm	Ball diameter
d_1	39,7 mm	Outer flange diameter inner ring
d_2	82 mm	Outer eye diameter
d_4	47 mm	Shank diameter
h_1	126,5 mm	Shank Length Internal thread head
C_1	21 mm	Width of the rod end
α	6 °	Tilt angle
l_4	167,5 mm	Total length internal thread head
l_7	42 mm	Distance drilling with/shaft start
d_5	58 mm	Shank diameter, large
r_{1smin}	0,6 mm	Edge Spacing
G_r	0,037 - 0,100	Radial Clearance
d_{OT}	0 mm	Bore diameter bearing, upper tolerance
d_{UT}	-0,012 mm	Bore diameter bearing, lower tolerance
B_{OT}	0 mm	Width inner ring, upper tolerance
B_{UT}	-0,12 mm	Width inner ring, lower tolerance
G_{rmax}	0,1 mm	Radial clearance, maximum
G_{rmin}	0,037 mm	Radial clearance, minimum

Temperature range

T_{min}	-60 °C	Operating temperature min.
T_{max}	200 °C	Operating temperature max.



Characteristics

-  Radial load
-  Axial load in one direction
-  Axial load in two directions
-  Grease Lubrication
-  Not sealed
-  Protected against rust
-  Static angular error and misalignment
-  Dynamic angular error and misalignment