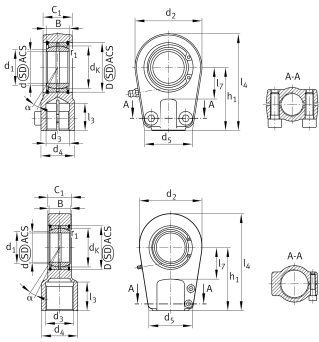


IMAGE
COMING SOON**GIHRK50-UK-2RS**

Rod end

Hydraulic rod end, with thread clamping device, right hand thread, maintenance-free, sliding layer: ELGOGLIDE, sealed design

Technical information



Your current product variant

| | | |
|--------------------|------------------------|-------------------------|
| Clampable | Clampable | |
| Maintenance | Maintenance free | |
| Mounting | Internal thread | |
| Lubrication nipple | Cannot be relubricated | |
| Slotted | Slotted, both sides | |
| Thread Pitch | Right-hand thread | |
| Sealing | 2RS | Lip seals on both sides |

Main Dimensions & Performance Data

| | | |
|-------------|-----------|-----------------------------------|
| C_r | 444.000 N | Basic dynamic load rating, radial |
| C_{0r} | 333.000 N | Basic static load rating, radial |
| d | 50 mm | Bore diameter bearing |
| D | 75 mm | Outside diameter bearing |
| l_4 | 168 mm | Total length internal thread head |
| B | 35 mm | Width inner ring, |
| d_2 | 116 mm | Outer eye diameter |
| $\approx m$ | 3,8 kg | Weight |



Dimensions

| | | |
|------------|-------------|--|
| d_K | 66 mm | Ball diameter |
| d_3 | M45x1,5 | Thread size |
| d_4 | 61 mm | Shank diameter |
| h_1 | 105 mm | Shank Length Internal thread head |
| C_1 | 40 mm | Width of the rod end |
| α | 6 ° | Tilt angle |
| l_3 | 46 mm | Thread length Internal thread |
| l_7 | 55 mm | Distance drilling with/shaft start |
| d_5 | 90 mm | Shank diameter, large |
| G_r | 0 - 0,06 mm | Radial Clearance |
| M_A | 110 Nm | Tightening torque |
| d_{OT} | 0 mm | Bore diameter bearing, upper tolerance |
| d_{UT} | -0,012 mm | Bore diameter bearing, lower tolerance |
| B_{OT} | 0 mm | Width inner ring, upper tolerance |
| B_{UT} | -0,12 mm | Width inner ring, lower tolerance |
| G_{rmax} | 0,06 mm | Radial clearance, maximum |
| G_{rmin} | 0 mm | Radial clearance, minimum |

Temperature range

| | | |
|-----------|--------|----------------------------|
| T_{min} | -30 °C | Operating temperature min. |
| T_{max} | 130 °C | Operating temperature max. |

Mounting dimensions

| | | |
|-------------|--------|----------------------------------|
| d_1 | 56 mm | Outer flange diameter inner ring |
| r_{1smin} | 0,6 mm | Edge Spacing |



Characteristics



Radial load



Axial load in one direction



Axial load in two directions



Lifetime lubrication, freedom from maintenance



Sealed on both sides



Static angular error and misalignment



Dynamic angular error and misalignment