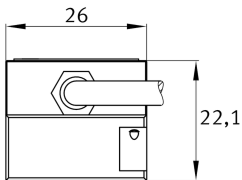
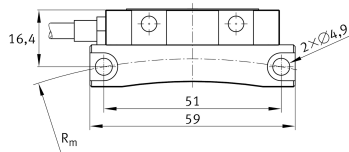
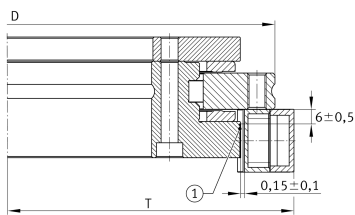


**MHI150-2-1-1-1-0672-06,0M-1-1-A**

angle measuring system

Measuring heads, for axial screw mounting

Technical information

**Digital Output**

	SIN COS 1Vpp + reference signal	Electronic interface
≈m	200 g	Weight

Main Dimensions & Performance Data

D	240 mm	Diameter bearing outer ring
H _M	26 mm	Height

Mounting dimensions

J _M	51 mm	Bore distance
R _m	114,6 mm	Pitch circle radius bores
T	128 mm	Distance bearing center measuring head

Additional information

	2x ISO4762- M4x35-8.8	Cap Head Screws Sensor
	2 Nm	Tightening torque
	0,2 Nm	Tightening torque upper tolerance
	-0,2 Nm	Tightening torque lower tolerance

Cable

	M23x1	Thread plug connector
	12	Pins plug connector