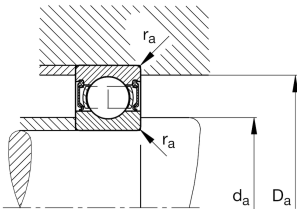
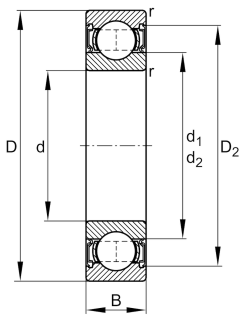


**FAG****61810-2RZ**

Deep groove ball bearing

Deep groove ball bearing 618..-2RZ, single row, shields, steel sheet metal cage

## Technical information



## Your current product variant

Sealing	2RZ	Non-contact seal on both sides
Cage	JN	Steel sheet metal
Tolerance class	PN	Normal (PN)
Dimensional / heat stabilization	SN	Rings dimensional stabilized up to 120°
Lubricant	GA13	Ball bearing and insert bearing grease
Radial internal clearance	CN (Group N)	Normal internal clearance
Bore type	Z	Cylindrical

## Main Dimensions &amp; Performance Data

d	50 mm	Bore diameter
D	65 mm	Outside diameter
B	7 mm	Width
C <sub>r</sub>	7.200 N	Basic dynamic load rating, radial
C <sub>0r</sub>	6.300 N	Basic static load rating, radial
C <sub>ur</sub>	440 N	Fatigue load limit, radial
n <sub>G</sub>	12.900 1/min	Limiting speed
n <sub>gr</sub>	6.400 1/min	Reference speed
m	0,053 kg	Weight



### Mounting dimensions

$d_{a \min}$	52 mm	Minimum diameter shaft shoulder
$D_{a \max}$	63 mm	Maximum diameter of housing shoulder
$r_{a \max}$	0,3 mm	Maximum fillet radius

### Dimensions

$r_{\min}$	0,3 mm	Minimum chamfer dimension
$D_1$	60,05 mm	Shoulder diameter outer ring
$D_2$	61,78 mm	Caliber diameter outer ring
$d_1$	55,1 mm	Shoulder diameter inner ring

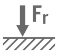
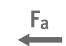




### Temperature range

$T_{\min}$	-20 °C	Operating temperature min.
$T_{\max}$	100 °C	Operating temperature max.

### Calculation factors

$f_0$	16	Calculation factor
-------	----	--------------------

### Characteristics

	Radial load
	Axial load in one direction
	Axial load in two directions
	Lifetime lubrication, freedom from maintenance
	Grease Lubrication
	Sealed on both sides