

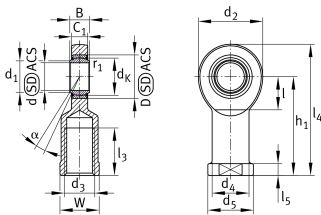
**GIL80-UK-2RS** [↗](#)

Rod end



Rod end with internal thread, maintenance-free, sliding layer: ELGOGLIDE, DIN ISO 12240-4, dimension series E, type F, inner ring curved surface with hard chromium coating, sealed, left hand thread

Technical information



Your current product variant

Clampable	Not clampable	
Maintenance	Maintenance free	
Mounting	Internal thread	
Lubrication nipple	Cannot be relubricated	
Slotted	No	
Thread Pitch	Left-hand thread	
Sealing	2RS	Lip seals on both sides

Main Dimensions & Performance Data

C_r	1.130.000 N	Basic dynamic load rating, radial
C_{0r}	667.000 N	Basic static load rating, radial
d	80 mm	Bore diameter bearing
d_2	180 mm	Outer eye diameter
l_4	320 mm	Total length internal thread head
$\approx m$	13,4 kg	Weight



Dimensions

C ₁	47 mm	Width of the rod end
D	120 mm	Outside diameter bearing
B	55 mm	Width inner ring
d _K	105 mm	Ball diameter
d ₃	M64x4	Thread size
d ₄	95 mm	Shank diameter
d ₅	110 mm	Shank diameter, large
h ₁	230 mm	Shank Length Internal thread head
α	6 °	Tilt angle
l ₃	85 mm	Thread length Internal thread
l ₅	25 mm	Length rod end shank
l ₇	100 mm	Distance drilling with/shaft start
W	100 mm	Width Across Flat
d _{UT}	-0,015 mm	Bore diameter bearing, lower tolerance
d _{OT}	0 mm	Bore diameter bearing, upper tolerance
B _{UT}	-0,15 mm	Width inner ring, lower tolerance
B _{OT}	0 mm	Width inner ring, upper tolerance
G _r	0 - 0,072	Radial Clearance
G _{rmin}	0 mm	Radial clearance, minimum
G _{rmax}	0,072 mm	Radial clearance, maximum

Mounting dimensions

r _{1smin}	1 mm	Edge Spacing
d ₁	89,4 mm	Outer flange diameter inner ring

Temperature range

T _{min}	-30 °C	Operating temperature min.
T _{max}	130 °C	Operating temperature max.



Characteristics



Radial load



Axial load in one direction



Axial load in two directions



Lifetime lubrication, freedom from maintenance



Sealed on both sides



Static angular error and misalignment



Dynamic angular error and misalignment