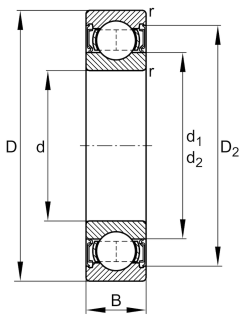


**FAG****61814-2RZ**

Deep groove ball bearing

Deep groove ball bearing 618..-2RZ, single row, shields, steel sheet metal cage

## Technical information



## Your current product variant

|                                  |              |   |
|----------------------------------|--------------|---|
| Sealing                          | 2RZ          | Non-contact seal on both sides          |
| Cage                             | JN           | Steel sheet metal                       |
| Tolerance class                  | PN           | Normal (ISO 492:2023)                   |
| Dimensional / heat stabilization | SN           | Rings dimensional stabilized up to 120° |
| Lubricant                        | GA13         | Ball bearing and insert bearing grease  |
| Radial internal clearance        | CN (Group N) | Normal internal clearance               |
| Bore type                        | Z            | Cylindrical                             |

## Main Dimensions &amp; Performance Data

|                 |             |                                   |
|-----------------|-------------|-----------------------------------|
| d               | 70 mm       | Bore diameter                     |
| D               | 90 mm       | Outside diameter                  |
| B               | 10 mm       | Width                             |
| C <sub>r</sub>  | 13.200 N    | Basic dynamic load rating, radial |
| C <sub>0r</sub> | 12.400 N    | Basic static load rating, radial  |
| C <sub>ur</sub> | 820 N       | Fatigue load limit, radial        |
| n <sub>G</sub>  | 9.000 1/min | Limiting speed                    |
| n <sub>gr</sub> | 5.300 1/min | Reference speed                   |
| m               | 0,139 kg    | Weight                            |



### Mounting dimensions

|              |         |                                      |
|--------------|---------|--------------------------------------|
| $d_{a \min}$ | 73,2 mm | Minimum diameter shaft shoulder      |
| $D_{a \max}$ | 86,8 mm | Maximum diameter of housing shoulder |
| $r_{a \max}$ | 0,6 mm  | Maximum fillet radius                |

### Dimensions

|            |          |                              |
|------------|----------|------------------------------|
| $r_{\min}$ | 0,6 mm   | Minimum chamfer dimension    |
| $D_1$      | 83,57 mm | Shoulder diameter outer ring |
| $D_2$      | 85,5 mm  | Caliber diameter outer ring  |
| $d_1$      | 76,6 mm  | Shoulder diameter inner ring |

### Temperature range

|            |        |                            |
|------------|--------|----------------------------|
| $T_{\min}$ | -20 °C | Operating temperature min. |
| $T_{\max}$ | 100 °C | Operating temperature max. |

### Calculation factors

|       |      |                    |
|-------|------|--------------------|
| $f_0$ | 16,1 | Calculation factor |
|-------|------|--------------------|

### Characteristics

|   |  |
|---|--|
|  | Radial load                                    |
|  | Axial load in one direction                    |
|  | Axial load in two directions                   |
|  | Lifetime lubrication, freedom from maintenance |
|  | Grease Lubrication                             |
|  | Sealed on both sides                           |