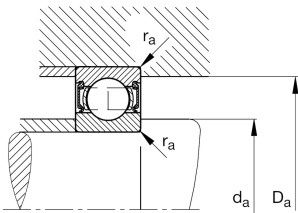
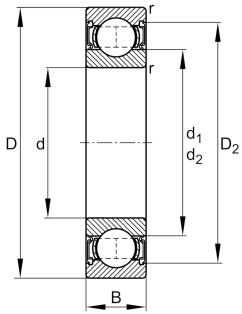


**FAG****S6202-2RSR>N**

Deep groove ball bearing

Deep groove ball bearing S62...-2RSR, corrosion-resistant materials, single row, seals, steel sheet metal cage

Technical information

**Your current product variant**

Version code	>N	Not marked on bearing
Material Bearing	S	Stainless steel
Sealing	2RSR	Contact seal on both sides
Cage	JN	Steel sheet metal
Tolerance class	PN	Normal (ISO 492:2023)
Dimensional / heat stabilization	SN	Rings dimensional stabilized up to 120°
Lubricant	Lubricating grease	
Radial internal clearance	CN (Group N)	Normal internal clearance
Bore type	Z	Cylindrical

Main Dimensions & Performance Data

d	15 mm	Bore diameter
D	35 mm	Outside diameter
B	11 mm	Width
C _r	8.100 N	Basic dynamic load rating, radial
C _{0r}	3.750 N	Basic static load rating, radial
C _{ur}	231 N	Fatigue load limit, radial
n _G	12.400 1/min	Limiting speed
≈m	45 g	Weight



Mounting dimensions

$d_{a \min}$	19,2 mm	Minimum diameter shaft shoulder
$D_{a \max}$	30,8 mm	Maximum diameter of housing shoulder
$r_{a \max}$	0,6 mm	Maximum fillet radius

Dimensions

r_{\min}	0,6 mm	Minimum chamfer dimension
D_1	29,4 mm	Shoulder diameter outer ring
D_2	30,85 mm	Caliber diameter outer ring
d_1	21,6 mm	Shoulder diameter inner ring








Temperature range

T_{\min}	-30 °C	Operating temperature min.
T_{\max}	100 °C	Operating temperature max.

Calculation factors

f_0	13,2	Calculation factor
-------	------	--------------------

Characteristics

	Radial load
	Axial load in one direction
	Axial load in two directions
	Lifetime lubrication, freedom from maintenance
	Grease Lubrication
	Sealed on both sides
	Protected against rust