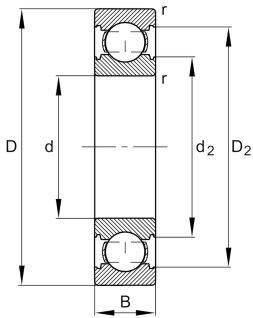
**FAG****HC6210-C-M-C4>V**

Deep groove ball bearing

Deep groove ball bearing HC62...-C-M, Hybrid bearing, single row, Generation C, solid brass cage

## Technical information

**Your current product variant**

Version code	>V	Not marked on bearing
Material Bearing	HC	Hybrid bearing, rolling elements ceramic, bearing rings made of steel
Changed internal design	C	GenerationC
Sealing	Without	Not sealed
Cage	M	Solid brass cage, rolling element guided
Tolerance class	P6	Class 6 (ISO 492:2023)
Dimensional / heat stabilization	SN	Rings dimensional stabilized up to 120°
Lubricant	Without	Bearing not greased
Radial internal clearance	C4 (Group 4)	Internal clearance larger than C3
Bore type	Z	Cylindrical



### Main Dimensions & Performance Data

d	50 mm	Bore diameter
D	90 mm	Outside diameter
B	20 mm	Width
C <sub>r</sub>	40.000 N	Basic dynamic load rating, radial
C <sub>0r</sub>	22.200 N	Basic static load rating, radial
C <sub>ur</sub>	1.170 N	Fatigue load limit, radial
n <sub>G</sub>	18.200 1/min	Limiting speed
n <sub>gr</sub>	9.200 1/min	Reference speed
m	0,471 kg	Weight

### Mounting dimensions

d <sub>a min</sub>	57 mm	Minimum diameter shaft shoulder
D <sub>a max</sub>	83 mm	Maximum diameter of housing shoulder
r <sub>a max</sub>	1 mm	Maximum fillet radius

### Dimensions

r <sub>min</sub>	1,1 mm	Minimum chamfer dimension
D <sub>1</sub>	78,64 mm	Shoulder diameter outer ring
D <sub>2</sub>	81,65 mm	Caliber diameter outer ring
d <sub>1</sub>	61,87 mm	Shoulder diameter inner ring
d <sub>2</sub>	59,23 mm	Caliber diameter inner ring

### Temperature range

T <sub>min</sub>	-30 °C	Operating temperature min.
T <sub>max</sub>	120 °C	Operating temperature max.



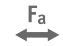




### Calculation factors

f <sub>0</sub>	13,8	Calculation factor
----------------	------	--------------------



### Characteristics

---

-  Radial load
-  Axial load in one direction
-  Axial load in two directions
-  Grease Lubrication
-  Oil Lubrication
-  Not sealed
-  Current insulated