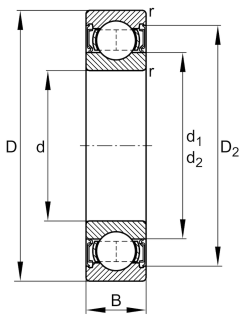


**FAG****61820-2RZ-C3**

Deep groove ball bearing

Deep groove ball bearing 618..-2RZ, single row, shields, steel sheet metal cage

## Technical information



## Your current product variant

Sealing	2RZ	Non-contact seal on both sides
Cage	JN	Steel sheet metal
Tolerance class	PN	Normal (ISO 492:2023)
Dimensional / heat stabilization	S0	Rings dimensional stabilized up to 150°
Lubricant	GA13	Ball bearing and insert bearing grease
Radial internal clearance	C3 (Group 3)	Internal clearance larger than CN
Bore type	Z	Cylindrical

## Main Dimensions &amp; Performance Data

d	100 mm	Bore diameter
D	125 mm	Outside diameter
B	13 mm	Width
C <sub>r</sub>	21.300 N	Basic dynamic load rating, radial
C <sub>0r</sub>	22.100 N	Basic static load rating, radial
C <sub>ur</sub>	1.250 N	Fatigue load limit, radial
n <sub>G</sub>	6.300 1/min	Limiting speed
n <sub>gr</sub>	4.150 1/min	Reference speed
m	0,316 kg	Weight



### Mounting dimensions

$d_{a \min}$	104,6 mm	Minimum diameter shaft shoulder
$D_{a \max}$	120,4 mm	Maximum diameter of housing shoulder
$r_{a \max}$	1 mm	Maximum fillet radius

### Dimensions

$r_{\min}$	1 mm	Minimum chamfer dimension
$D_1$	117,07 mm	Shoulder diameter outer ring
$D_2$	119,2 mm	Caliber diameter outer ring
$d_1$	108,2 mm	Shoulder diameter inner ring

### Temperature range

$T_{\min}$	-20 °C	Operating temperature min.
$T_{\max}$	100 °C	Operating temperature max.

### Calculation factors

$f_0$	16	Calculation factor
-------	----	--------------------

### Characteristics

-  Radial load
-  Axial load in one direction
-  Axial load in two directions
-  Lifetime lubrication, freedom from maintenance
-  Grease Lubrication
-  Sealed on both sides