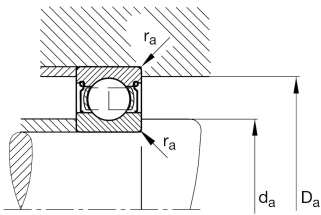
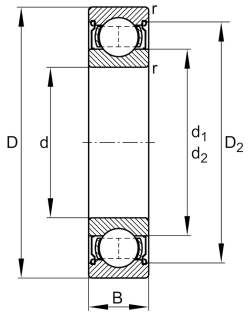


**FAG****S61901-2Z>N**

Deep groove ball bearing

Deep groove ball bearing S619..-2Z, corrosion-resistant materials, single row, shields, steel sheet metal cage

Technical information



Your current product variant

Version code	>N	Not marked on bearing
Material Bearing	S	Stainless steel
Sealing	2Z	Non-contact shield on both sides
Cage	JN	Steel sheet metal
Tolerance class	PN	Normal (PN)
Dimensional / heat stabilization	SN	Rings dimensional stabilized up to 120°
Lubricant	Lubricating grease	
Radial internal clearance	CN (Group N)	Normal internal clearance
Bore type	Z	Cylindrical

Main Dimensions & Performance Data

d	12 mm	Bore diameter
D	24 mm	Outside diameter
B	6 mm	Width
C_r	3.050 N	Basic dynamic load rating, radial
C_{0r}	1.460 N	Basic static load rating, radial
C_{ur}	91 N	Fatigue load limit, radial
n_G	38.000 1/min	Limiting speed
n_{gr}	23.300 1/min	Reference speed
$\approx m$	113 g	Weight



Mounting dimensions

$d_{a \min}$	14 mm	Minimum diameter shaft shoulder
$D_{a \max}$	22 mm	Maximum diameter of housing shoulder
$r_{a \max}$	0,3 mm	Maximum fillet radius

Dimensions

r_{\min}	0,3 mm	Minimum chamfer dimension
D_1	20,3 mm	Shoulder diameter outer ring
D_2	21,3 mm	Caliber diameter outer ring
d_1	15,7 mm	Shoulder diameter inner ring








Temperature range

T_{\min}	-30 °C	Operating temperature min.
T_{\max}	120 °C	Operating temperature max.

Calculation factors

f_0	14,5	Calculation factor
-------	------	--------------------

Characteristics

	Radial load
	Axial load in one direction
	Axial load in two directions
	Lifetime lubrication, freedom from maintenance
	Grease Lubrication
	Sealed on both sides
	Protected against rust