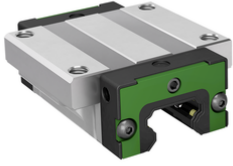


**KWLT20-A-V1-G4**

## Recirculating ball bearing carriage

Standard flanged carriage, standard end plate,  
for four-row linear recirculating ball bearing  
and guideway assembly



## Technical information

**Your current product variant**

Size Code	20	
Carriage design	A	Standard design
Preload	V1	Slight preload (standard)
Accuracy class	G4	

**Main Dimensions & Performance Data**

H	30 mm	Height system
B	63 mm	Width carriage
L	71,8 mm	Overall length carriage
C	12.300 N	Dynamic load rating
C <sub>0</sub>	22.400 N	Basic static load capacity
M <sub>0x</sub>	244 Nm	Static moment rating about X-axis
M <sub>0y</sub>	173 Nm	Static moment rating about Y-axis
M <sub>0z</sub>	173 Nm	Static moment rating about Z-axis
M <sub>0x</sub>	122 Nm	Dynamic moment rating about X-axis
M <sub>0y</sub>	154 Nm	Dynamic moment rating about y-axis
M <sub>0z</sub>	154 Nm	Dynamic moment rating about Z-axis
≈m	400 g	Weight



### Mounting dimensions

A <sub>1</sub>	21,5 mm	Distance from locating edge on carriage to locating edge on guideway
A <sub>2</sub>	5 mm	Distance from locating edge to hole
L <sub>1</sub>	50 mm	Carrier length
H <sub>1</sub>	5 mm	Free space, system dimension
J <sub>B</sub>	53 mm	Hole spacing
J <sub>L</sub>	40 mm	Hole Spacing
A <sub>3</sub>	5,7 mm	Position lubrication connector
T <sub>5</sub>	9 mm	Thread depth
G <sub>2</sub>	M6	Thread size, DIN ISO 4762-12.9
G2 M <sub>A</sub>	16,5 Nm	Maximum tightening torque

### Additional information

VMKB_065	KWLT	Material name
----------	------	---------------