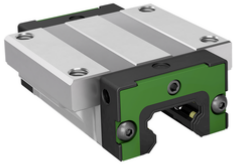




KWLT20-A-V2-G4 [↗](#)

Recirculating ball bearing carriage

Standard flanged carriage, standard end plate, for four-row linear recirculating ball bearing and guideway assembly



Technical information



Your current product variant

Size code	20	
Carriage design	A	Standard design
Preload	V2	Preload class 2
Accuracy class	G4	

Main Dimensions & Performance Data

H	30 mm	Height system
B	63 mm	Width carriage
L	71,8 mm	Overall length carriage
C	12.300 N	Dynamic load rating
C ₀	22.400 N	Basic static load capacity
M _{0x}	244 Nm	Static moment rating about X-axis
M _{0y}	173 Nm	Static moment rating about Y-axis
M _{0z}	173 Nm	Static moment rating about Z-axis
M _{0x}	122 Nm	Dynamic moment rating about X-axis
M _{0y}	154 Nm	Dynamic moment rating about y-axis
M _{0z}	154 Nm	Dynamic moment rating about Z-axis
≈m	400 g	Weight



Mounting dimensions

A ₁	21,5 mm	Distance from locating edge on carriage to locating edge on guideway
A ₂	5 mm	Distance from locating edge to hole
L ₁	50 mm	Carrier length
H ₁	5 mm	Free space, system dimension
J _B	53 mm	Hole spacing
J _L	40 mm	Hole Spacing
A ₃	5,7 mm	Position lubrication connector
T ₅	9 mm	Thread depth
G ₂	M6	Thread size, DIN ISO 4762-12.9
G2 M _A	16,5 Nm	Maximum tightening torque

Additional information

VMKB_065	KWLT	Material name
----------	------	---------------