

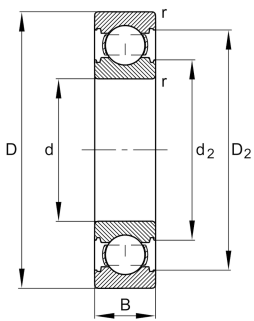
**FAG****6307-C-N>V**

## Deep groove ball bearing



Deep groove ball bearing 63...-C-N, single row, Generation C, steel sheet metal cage, ring groove

## Technical information

**Your current product variant**

|                                  |              |   |
|----------------------------------|--------------|---|
| Version code                     | >V           | Not marked on bearing                   |
| Changed internal design          | C            | GenerationC                             |
| Type of Sealing                  | Without      | Not sealed                              |
| Design, bearing outer ring       | N            | Ring groove for snap ring               |
| Cage                             | JN           | Steel sheet metal                       |
| Tolerance class                  | P6           | Class6 (P6), better then PN             |
| Dimensional / heat stabilization | SN           | Rings dimensional stabilized up to 120° |
| Lubricant                        | Without      | Bearing not greased                     |
| Radial internal clearance        | CN (Group N) | Normal internal clearance               |
| Bore type                        | Z            | Cylindrical                             |



### Main Dimensions & Performance Data

|                 |              |                                   |
|-----------------|--------------|-----------------------------------|
| d               | 35 mm        | Bore diameter                     |
| D               | 80 mm        | Outside diameter                  |
| B               | 21 mm        | Width                             |
| C <sub>r</sub>  | 38.500 N     | Basic dynamic load rating, radial |
| C <sub>0r</sub> | 19.100 N     | Basic static load rating, radial  |
| C <sub>ur</sub> | 1.320 N      | Fatigue load limit, radial        |
| n <sub>G</sub>  | 13.600 1/min | Limiting speed                    |
| n <sub>gr</sub> | 10.900 1/min | Reference speed                   |
| m               | 0,424 kg     | Weight                            |

### Mounting dimensions

|                    |        |                                      |
|--------------------|--------|--------------------------------------|
| d <sub>a min</sub> | 44 mm  | Minimum diameter shaft shoulder      |
| D <sub>a max</sub> | 71 mm  | Maximum diameter of housing shoulder |
| r <sub>a max</sub> | 1,5 mm | Maximum fillet radius                |

### Dimensions

|                  |          |                              |
|------------------|----------|------------------------------|
| r <sub>min</sub> | 1,5 mm   | Minimum chamfer dimension    |
| D <sub>1</sub>   | 66,68 mm | Shoulder diameter outer ring |
| D <sub>2</sub>   | 69,68 mm | Caliber diameter outer ring  |
| d <sub>1</sub>   | 48,86 mm | Shoulder diameter inner ring |
| d <sub>2</sub>   | 46,18 mm | Caliber diameter inner ring  |

### Temperature range

|                  |        |                            |
|------------------|--------|----------------------------|
| T <sub>min</sub> | -30 °C | Operating temperature min. |
| T <sub>max</sub> | 120 °C | Operating temperature max. |

### Calculation factors

|                |      |                    |
|----------------|------|--------------------|
| f <sub>0</sub> | 13,1 | Calculation factor |
|----------------|------|--------------------|



### Characteristics

---



Radial load



Axial load in one direction



Axial load in two directions



Grease Lubrication



Oil Lubrication



Not sealed