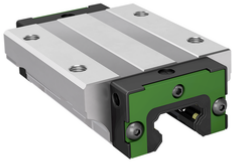


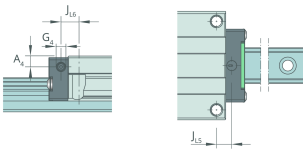
**KWLT45-AL-V1-G4**

## Recirculating ball bearing carriage

Long flanged carriage, standard end plate, for four-row linear recirculating ball bearing and guideway assembly



## Technical information

**Your current product variant**

Size code	45	
Carriage design	AL	Long design
Preload class	V1	Slight preload (standard)
Accuracy class	G4	

**Main Dimensions & Performance Data**

H	60 mm	Height system
B	120 mm	Width carriage
L	167 mm	Overall length carriage
C	72.000 N	Dynamic load rating
C <sub>0</sub>	135.000 N	Basic static load capacity
M <sub>0x</sub>	3.600 Nm	Static moment rating about X-axis
M <sub>0y</sub>	2.600 Nm	Static moment rating about Y-axis
M <sub>0z</sub>	2.600 Nm	Static moment rating about Z-axis
M <sub>0x</sub>	1.735 Nm	Dynamic moment rating about X-axis
M <sub>0y</sub>	2.440 Nm	Dynamic moment rating about y-axis
M <sub>0z</sub>	2.440 Nm	Dynamic moment rating about Z-axis
≈m	3,35 kg	Weight



### Mounting dimensions

A <sub>1</sub>	37,5 mm	Distance from locating edge on carriage to locating edge on guideway
A <sub>2</sub>	10 mm	Distance from locating edge to hole
L <sub>1</sub>	128 mm	Carrier length
H <sub>1</sub>	14 mm	Free space, system dimension
J <sub>B</sub>	100 mm	Hole spacing
J <sub>L</sub>	80 mm	Hole Spacing
A <sub>3</sub>	8,5 mm	Position lubrication connector
T <sub>5</sub>	15 mm	Thread depth
G <sub>2</sub>	M12	Thread size, DIN ISO 4762-12.9
G2 M <sub>A</sub>	140 Nm	Maximum tightening torque

### Additional information

VMKB_065	KWLT	Material name
----------	------	---------------