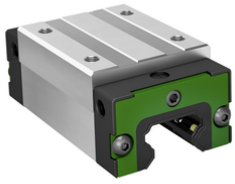


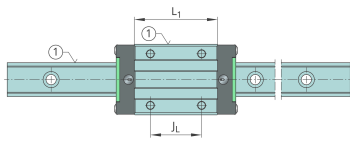
**KWLT45-H-V0-G4**

## Recirculating ball bearing carriage

High carriage, standard end plate, for four-row linear recirculating ball bearing and guideway assembly



## Technical information

**Your current product variant**

Size Code	45	
Carriage design	H	High design
Preload	V0	Slight clearance
Accuracy class	G4	

**Main Dimensions & Performance Data**

H	70 mm	Height system
B	86 mm	Width carriage
L	135 mm	Overall length carriage
C	59.000 N	Dynamic load rating
C <sub>0</sub>	101.000 N	Basic static load capacity
M <sub>0x</sub>	2.700 Nm	Static moment rating about X-axis
M <sub>0y</sub>	1.520 Nm	Static moment rating about Y-axis
M <sub>0z</sub>	1.520 Nm	Static moment rating about Z-axis
M <sub>0x</sub>	1.422 Nm	Dynamic moment rating about X-axis
M <sub>0y</sub>	1.505 Nm	Dynamic moment rating about y-axis
M <sub>0z</sub>	1.505 Nm	Dynamic moment rating about Z-axis
≈m	2,6 kg	Weight



### Mounting dimensions

A <sub>1</sub>	20,5 mm	Distance from locating edge on carriage to locating edge on guideway
A <sub>2</sub>	13 mm	Distance from locating edge to hole
L <sub>1</sub>	96 mm	Carrier length
H <sub>1</sub>	14 mm	Free space, system dimension
J <sub>B</sub>	60 mm	Hole spacing
J <sub>L</sub>	60 mm	Hole Spacing
A <sub>3</sub>	18,5 mm	Position lubrication connector
T <sub>5</sub>	20,5 mm	Thread depth
G <sub>2</sub>	M10	Thread size, DIN ISO 4762-12.9
G2 M <sub>A</sub>	81 Nm	Maximum tightening torque

### Additional information

VMKB_065	KWLT	Material name
----------	------	---------------