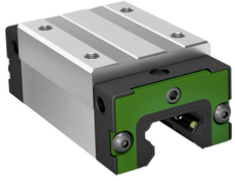


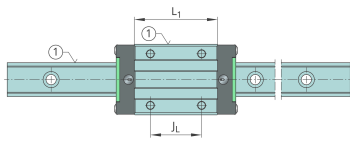
**KWLT35-H-V1-G4** [↗](#)

Recirculating ball bearing carriage

High carriage, standard end plate, for four-row linear recirculating ball bearing and guideway assembly



Technical information

**Your current product variant**

Size code	35	
Carriage design	H	High design
Preload	V1	Slight preload (standard)
Accuracy class	G4	

Main Dimensions & Performance Data

H	55 mm	Height system
B	70 mm	Width carriage
L	114 mm	Overall length carriage
C	36.500 N	Dynamic load rating
C ₀	65.000 N	Basic static load capacity
M _{0x}	1.270 Nm	Static moment rating about X-axis
M _{0y}	800 Nm	Static moment rating about Y-axis
M _{0z}	800 Nm	Static moment rating about Z-axis
M _{0x}	664 Nm	Dynamic moment rating about X-axis
M _{0y}	746 Nm	Dynamic moment rating about y-axis
M _{0z}	746 Nm	Dynamic moment rating about Z-axis
≈m	1,45 kg	Weight



Mounting dimensions

A ₁	18 mm	Distance from locating edge on carriage to locating edge on guideway
A ₂	10 mm	Distance from locating edge to hole
L ₁	77 mm	Carrier length
H ₁	9,5 mm	Free space, system dimension
J _B	50 mm	Hole spacing
J _L	50 mm	Hole Spacing
A ₃	15 mm	Position lubrication connector
T ₅	17 mm	Thread depth
G ₂	M8	Thread size, DIN ISO 4762-12.9
G2 M _A	40 Nm	Maximum tightening torque

Additional information

VMKB_065	KWLT	Material name
----------	------	---------------