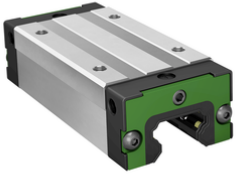


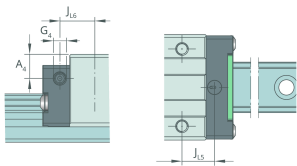
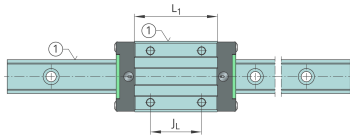
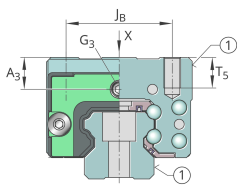
**KWLT30-S-V1-G3**

Recirculating ball bearing carriage

Slim carriage, standard end plate, for four-row linear recirculating ball bearing and guideway assembly



Technical information

**Your current product variant**

Size code	30	
Carriage design	S	Narrow design
Preload class	V1	Slight preload (standard)
Accuracy class	G3	

Main Dimensions & Performance Data

H	42 mm	Height system
B	60 mm	Width carriage
L	100,4 mm	Overall length carriage
C	27.500 N	Dynamic load rating
C ₀	49.500 N	Basic static load capacity
M _{0x}	790 Nm	Static moment rating about X-axis
M _{0y}	540 Nm	Static moment rating about Y-axis
M _{0z}	540 Nm	Static moment rating about Z-axis
M _{0x}	406 Nm	Dynamic moment rating about X-axis
M _{0y}	493 Nm	Dynamic moment rating about y-axis
M _{0z}	493 Nm	Dynamic moment rating about Z-axis
≈m	0,76 kg	Weight



Mounting dimensions

A ₁	16 mm	Distance from locating edge on carriage to locating edge on guideway
A ₂	10 mm	Distance from locating edge to hole
L ₁	67,4 mm	Carrier length
H ₁	9 mm	Free space, system dimension
J _B	40 mm	Hole spacing
J _L	40 mm	Hole Spacing
A ₃	8 mm	Position lubrication connector
T ₅	8,5 mm	Thread depth
G ₂	M8	Thread size, DIN ISO 4762-12.9
G2 M _A	40 Nm	Maximum tightening torque

Additional information

VMKB_065	KWLT	Material name
----------	------	---------------