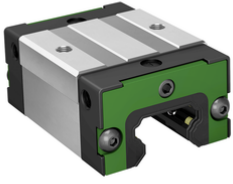


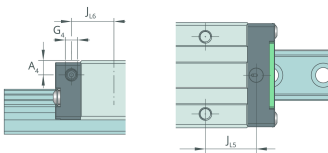
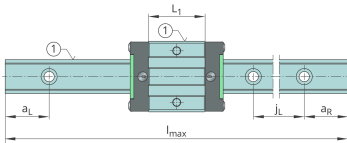
**KWLT20-US-V0-G3**

Recirculating ball bearing carriage

Short & slim carriage, standard end plate, for four-row linear recirculating ball bearing and guideway assembly



Technical information

**Your current product variant**

Size code	20	
Carriage design	US	Short, high design
Preload	V0	Slight clearance
Accuracy class	G3	

Main Dimensions & Performance Data

H	30 mm	Height system
B	44 mm	Width carriage
L	53,9 mm	Overall length carriage
C	9.300 N	Dynamic load rating
C ₀	15.000 N	Basic static load capacity
M _{0x}	163 Nm	Static moment rating about X-axis
M _{0y}	83 Nm	Static moment rating about Y-axis
M _{0z}	83 Nm	Static moment rating about Z-axis
M _{0x}	95 Nm	Dynamic moment rating about X-axis
M _{0y}	78 Nm	Dynamic moment rating about y-axis
M _{0z}	78 Nm	Dynamic moment rating about Z-axis
≈m	210 g	Weight



Mounting dimensions

A ₁	12 mm	Distance from locating edge on carriage to locating edge on guideway
A ₂	6 mm	Distance from locating edge to hole
L ₁	32,1 mm	Carrier length
H ₁	5 mm	Free space, system dimension
J _B	32 mm	Hole spacing
A ₃	5,7 mm	Position lubrication connector
T ₅	6,5 mm	Thread depth
G ₂	M5	Thread size, DIN ISO 4762-12.9
G2 M _A	9,7 Nm	Maximum tightening torque

Additional information

VMKB_065	KWLT	Material name
----------	------	---------------