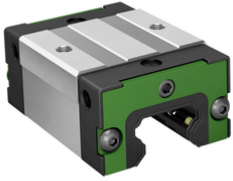


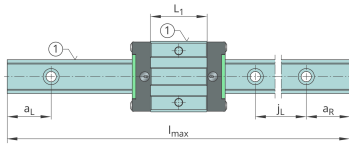
**KWLT20-US-V1-G3**

## Recirculating ball bearing carriage

Short & slim carriage, standard end plate, for four-row linear recirculating ball bearing and guideway assembly



## Technical information

**Your current product variant**

Size code	20	
Carriage design	US	Short, high design
Preload	V1	Slight preload (standard)
Accuracy class	G3	

**Main Dimensions & Performance Data**

H	30 mm	Height system
B	44 mm	Width carriage
L	53,9 mm	Overall length carriage
C	9.300 N	Dynamic load rating
C <sub>0</sub>	15.000 N	Basic static load capacity
M <sub>0x</sub>	163 Nm	Static moment rating about X-axis
M <sub>0y</sub>	83 Nm	Static moment rating about Y-axis
M <sub>0z</sub>	83 Nm	Static moment rating about Z-axis
M <sub>0x</sub>	95 Nm	Dynamic moment rating about X-axis
M <sub>0y</sub>	78 Nm	Dynamic moment rating about y-axis
M <sub>0z</sub>	78 Nm	Dynamic moment rating about Z-axis
≈m	210 g	Weight



### Mounting dimensions

---

A <sub>1</sub>	12 mm	Distance from locating edge on carriage to locating edge on guideway
A <sub>2</sub>	6 mm	Distance from locating edge to hole
L <sub>1</sub>	32,1 mm	Carrier length
H <sub>1</sub>	5 mm	Free space, system dimension
J <sub>B</sub>	32 mm	Hole spacing
A <sub>3</sub>	5,7 mm	Position lubrication connector
T <sub>5</sub>	6,5 mm	Thread depth
G <sub>2</sub>	M5	Thread size, DIN ISO 4762-12.9
G2 M <sub>A</sub>	9,7 Nm	Maximum tightening torque

### Additional information

---

VMKB_065	KWLT	Material name
----------	------	---------------