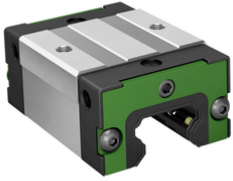


**KWLT25-US-V0-G4** [↗](#)

## Recirculating ball bearing carriage

Short & slim carriage, standard end plate, for four-row linear recirculating ball bearing and guideway assembly



## Technical information

**Your current product variant**

Size code	25	
Carriage design	US	Short, high design
Preload class	V0	Slight clearance
Accuracy class	G4	

**Main Dimensions & Performance Data**

H	36 mm	Height system
B	48 mm	Width carriage
L	63,6 mm	Overall length carriage
C	14.900 N	Dynamic load rating
C <sub>0</sub>	24.300 N	Basic static load capacity
M <sub>0x</sub>	320 Nm	Static moment rating about X-axis
M <sub>0y</sub>	163 Nm	Static moment rating about Y-axis
M <sub>0z</sub>	163 Nm	Static moment rating about Z-axis
M <sub>0x</sub>	183 Nm	Dynamic moment rating about X-axis
M <sub>0y</sub>	153 Nm	Dynamic moment rating about y-axis
M <sub>0z</sub>	153 Nm	Dynamic moment rating about Z-axis
≈m	320 g	Weight



### Mounting dimensions

---

A <sub>1</sub>	12,5 mm	Distance from locating edge on carriage to locating edge on guideway
A <sub>2</sub>	6,5 mm	Distance from locating edge to hole
L <sub>1</sub>	38,8 mm	Carrier length
H <sub>1</sub>	7 mm	Free space, system dimension
J <sub>B</sub>	35 mm	Hole spacing
A <sub>3</sub>	6,5 mm	Position lubrication connector
T <sub>5</sub>	6,5 mm	Thread depth
G <sub>2</sub>	M6	Thread size, DIN ISO 4762-12.9
G2 M <sub>A</sub>	16,5 Nm	Maximum tightening torque

### Additional information

---

VMKB_065	KWLT	Material name
----------	------	---------------