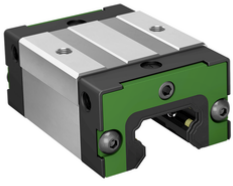


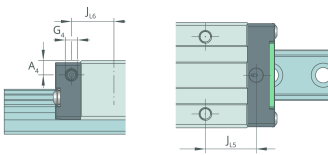
**KWLT25-US-V1-G4** [↗](#)

Recirculating ball bearing carriage

Short & slim carriage, standard end plate, for four-row linear recirculating ball bearing and guideway assembly



Technical information

**Your current product variant**

Size code	25	
Carriage design	US	Short, high design
Preload	V1	Slight preload (standard)
Accuracy class	G4	

Main Dimensions & Performance Data

H	36 mm	Height system
B	48 mm	Width carriage
L	63,6 mm	Overall length carriage
C	14.900 N	Dynamic load rating
C ₀	24.300 N	Basic static load capacity
M _{0x}	320 Nm	Static moment rating about X-axis
M _{0y}	163 Nm	Static moment rating about Y-axis
M _{0z}	163 Nm	Static moment rating about Z-axis
M _{0x}	183 Nm	Dynamic moment rating about X-axis
M _{0y}	153 Nm	Dynamic moment rating about y-axis
M _{0z}	153 Nm	Dynamic moment rating about Z-axis
≈m	320 g	Weight



Mounting dimensions

A ₁	12,5 mm	Distance from locating edge on carriage to locating edge on guideway
A ₂	6,5 mm	Distance from locating edge to hole
L ₁	38,8 mm	Carrier length
H ₁	7 mm	Free space, system dimension
J _B	35 mm	Hole spacing
A ₃	6,5 mm	Position lubrication connector
T ₅	6,5 mm	Thread depth
G ₂	M6	Thread size, DIN ISO 4762-12.9
G2 M _A	16,5 Nm	Maximum tightening torque

Additional information

VMKB_065	KWLT	Material name
----------	------	---------------