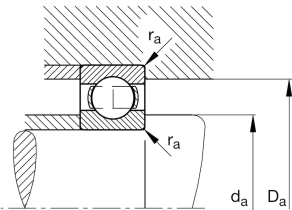
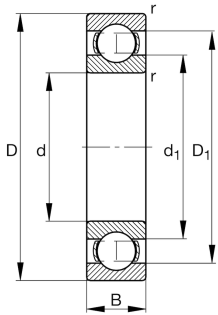


**FAG****S6009>N**

Deep groove ball bearing

Deep groove ball bearing S60, corrosion-resistant materials, single row, steel sheet metal cage

Technical information



Your current product variant

Version code	>N	Not marked on bearing
Material Bearing	S	Stainless steel
Sealing	Without	Not sealed
Cage	JN	Steel sheet metal
Tolerance class	PN	Normal (ISO 492:2023)
Dimensional / heat stabilization	SN	Rings dimensional stabilized up to 120°
Lubricant	Without	Bearing not greased
Radial internal clearance	CN (Group N)	Normal internal clearance
Bore type	Z	Cylindrical

Main Dimensions & Performance Data

d	45 mm	Bore diameter
D	75 mm	Outside diameter
B	16 mm	Width
C _r	21.100 N	Basic dynamic load rating, radial
C _{0r}	14.000 N	Basic static load rating, radial
C _{ur}	870 N	Fatigue load limit, radial
n _G	13.100 1/min	Limiting speed
n _{gr}	9.800 1/min	Reference speed
m	234 g	Weight



Mounting dimensions

$d_{a \min}$	49,6 mm	Minimum diameter shaft shoulder
$D_{a \max}$	70,4 mm	Maximum diameter of housing shoulder
$r_{a \max}$	1 mm	Maximum fillet radius

Dimensions

r_{\min}	1 mm	Minimum chamfer dimension
D_1	65,7 mm	Shoulder diameter outer ring
D_2	68 mm	Caliber diameter outer ring
d_1	54,45 mm	Shoulder diameter inner ring


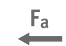





Temperature range

T_{\min}	-30 °C	Operating temperature min.
T_{\max}	120 °C	Operating temperature max.

Calculation factors

f_0	15,3	Calculation factor
-------	------	--------------------

Characteristics

	Radial load
	Axial load in one direction
	Axial load in two directions
	Grease Lubrication
	Oil Lubrication
	Not sealed
	Protected against rust