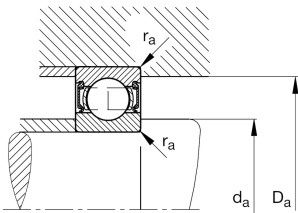
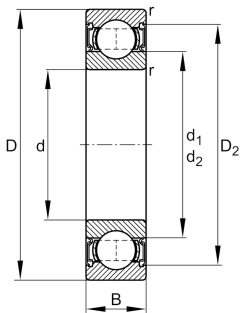


**FAG****S6205-2RSR-C3>N**

Deep groove ball bearing

Deep groove ball bearing S62...-2RSR, corrosion-resistant materials, single row, seals, steel sheet metal cage

Technical information

**Your current product variant**

Version code	>N	Not marked on bearing
Material Bearing	S	Stainless steel
Sealing	2RSR	Contact seal on both sides
Cage	JN	Steel sheet metal
Tolerance class	PN	Normal (ISO 492:2023)
Dimensional / heat stabilization	SN	Rings dimensional stabilized up to 120°
Lubricant	Lubricating grease	
Radial internal clearance	C3 (Group 3)	Internal clearance larger than CN
Bore type	Z	Cylindrical

Main Dimensions & Performance Data

d	25 mm	Bore diameter
D	52 mm	Outside diameter
B	15 mm	Width
C _r	14.900 N	Basic dynamic load rating, radial
C _{0r}	7.900 N	Basic static load rating, radial
C _{ur}	485 N	Fatigue load limit, radial
n _G	7.900 1/min	Limiting speed
≈m	128 g	Weight



Mounting dimensions

$d_{a \min}$	30,6 mm	Minimum diameter shaft shoulder
$D_{a \max}$	46,4 mm	Maximum diameter of housing shoulder
$r_{a \max}$	1 mm	Maximum fillet radius

Dimensions

r_{\min}	1 mm	Minimum chamfer dimension
D_1	44,2 mm	Shoulder diameter outer ring
D_2	46,45 mm	Caliber diameter outer ring
d_1	33,8 mm	Shoulder diameter inner ring








Temperature range

T_{\min}	-30 °C	Operating temperature min.
T_{\max}	100 °C	Operating temperature max.

Calculation factors

f_0	13,9	Calculation factor
-------	------	--------------------

Characteristics

	Radial load
	Axial load in one direction
	Axial load in two directions
	Lifetime lubrication, freedom from maintenance
	Grease Lubrication
	Sealed on both sides
	Protected against rust