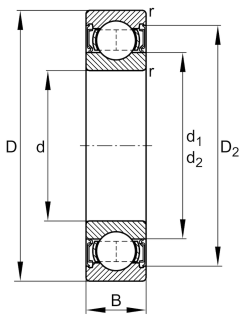


**FAG****61809-2RZ-C3**

Deep groove ball bearing

Deep groove ball bearing 618..-2RZ, single row, shields, steel sheet metal cage

Technical information



Your current product variant

Sealing	2RZ	Non-contact seal on both sides
Cage	JN	Steel sheet metal
Tolerance class	PN	Normal (PN)
Dimensional / heat stabilization	SN	Rings dimensional stabilized up to 120°
Lubricant	GA14	Ball bearing grease, low noise
Radial internal clearance	C3 (Group 3)	Internal clearance larger than CN
Bore type	Z	Cylindrical

Main Dimensions & Performance Data

d	45 mm	Bore diameter
D	58 mm	Outside diameter
B	7 mm	Width
C _r	7.000 N	Basic dynamic load rating, radial
C _{0r}	5.900 N	Basic static load rating, radial
C _{ur}	400 N	Fatigue load limit, radial
n _G	14.300 1/min	Limiting speed
n _{gr}	7.300 1/min	Reference speed
m	0,04 kg	Weight



Mounting dimensions

$d_{a \min}$	47 mm	Minimum diameter shaft shoulder
$D_{a \max}$	56 mm	Maximum diameter of housing shoulder
$r_{a \max}$	0,3 mm	Maximum fillet radius

Dimensions

r_{\min}	0,3 mm	Minimum chamfer dimension
D_1	54,05 mm	Shoulder diameter outer ring
D_2	55,3 mm	Caliber diameter outer ring
d_1	49,1 mm	Shoulder diameter inner ring

Temperature range

T_{\min}	-20 °C	Operating temperature min.
T_{\max}	100 °C	Operating temperature max.

Calculation factors

f_0	16,3	Calculation factor
-------	------	--------------------

Characteristics

	Radial load
	Axial load in one direction
	Axial load in two directions
	Lifetime lubrication, freedom from maintenance
	Grease Lubrication
	Sealed on both sides