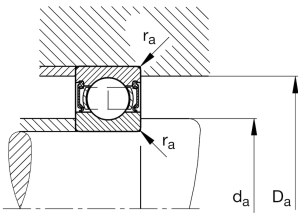
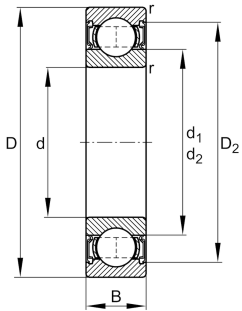


**FAG****S6007-2RSR-FD>N**

Deep groove ball bearing

Deep groove ball bearing S60..-2RS-FD, corrosion-resistant materials, for Food industry, single row, seals, steel sheet metal cage

Technical information

**Your current product variant**

| | | |
|----------------------------------|--------------|---|
| Version code | >N | Not marked on bearing |
| Material Bearing | S | Stainless steel |
| Sealing | 2RSR | Contact seal on both sides |
| Cage | JN | Steel sheet metal |
| Tolerance class | PN | Normal (ISO 492:2023) |
| Dimensional / heat stabilization | SN | Rings dimensional stabilized up to 120° |
| Lubricant | FD | Grease with food application approval to NSF H1 |
| Radial internal clearance | CN (Group N) | Normal internal clearance |
| Bore type | Z | Cylindrical |

Main Dimensions & Performance Data

| | | |
|-------------|-------------|-----------------------------------|
| d | 35 mm | Bore diameter |
| D | 62 mm | Outside diameter |
| B | 14 mm | Width |
| C_r | 17.000 N | Basic dynamic load rating, radial |
| C_{0r} | 10.300 N | Basic static load rating, radial |
| C_{ur} | 640 N | Fatigue load limit, radial |
| n_G | 6.200 1/min | Limiting speed |
| $\approx m$ | 0,155 kg | Weight |



Mounting dimensions

| | | |
|--------------|---------|--------------------------------------|
| $d_{a \min}$ | 39,6 mm | Minimum diameter shaft shoulder |
| $D_{a \max}$ | 57,4 mm | Maximum diameter of housing shoulder |
| $r_{a \max}$ | 1 mm | Maximum fillet radius |

Dimensions

| | | |
|------------|----------|------------------------------|
| r_{\min} | 1 mm | Minimum chamfer dimension |
| D_1 | 53,7 mm | Shoulder diameter outer ring |
| D_2 | 55,15 mm | Caliber diameter outer ring |
| d_1 | 43,3 mm | Shoulder diameter inner ring |








Temperature range

| | | |
|------------|--------|----------------------------|
| T_{\min} | -30 °C | Operating temperature min. |
| T_{\max} | 100 °C | Operating temperature max. |

Calculation factors

| | | |
|-------|------|--------------------|
| f_0 | 14,9 | Calculation factor |
|-------|------|--------------------|

Characteristics

| | |
|---|--|
|  | Radial load |
|  | Axial load in one direction |
|  | Axial load in two directions |
|  | Lifetime lubrication, freedom from maintenance |
|  | Grease Lubrication |
|  | Sealed on both sides |
|  | Protected against rust |