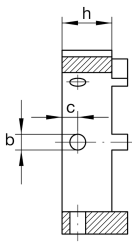
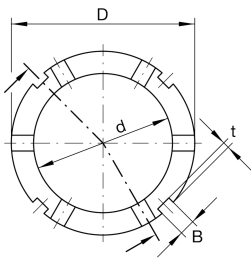
**AMS110**

Locknut socketadapter for precision locknuts AM

adapter for precision locknuts AM

Technical information

**Dimensions**

| | | |
|----|----------|--------------------------------|
| D | 130 mm | Outside diameter |
| h | 25 mm | Height |
| d | 110 mm | Bore diameter |
| B | 10 mm | Groove width |
| b | 8 mm | Bore diameter through hole |
| | H11 | Bore diameter through hole fit |
| c | 10 mm | Distance bore |
| t | 4 mm | Groove depth |
| ≈m | 0,711 kg | Weight |

Additional information

AM100, AM110

Suitable nut