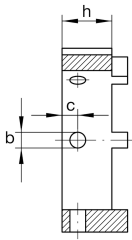
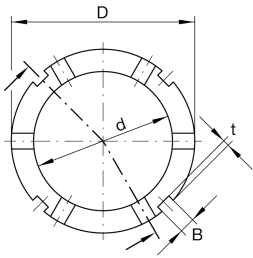


AMS130 [↗](#)

Locknut socketadapter for precision locknuts AM

adapter for precision locknuts AM

Technical information



Dimensions

D	155 mm	Outside diameter
h	25 mm	Height
d	130 mm	Bore diameter
B	12 mm	Groove width
b	8 mm	Bore diameter through hole
	H11	Bore diameter through hole fit
c	10 mm	Distance bore
t	5 mm	Groove depth
≈m	1,026 kg	Weight

Additional information

AM120, AM130

Suitable nut