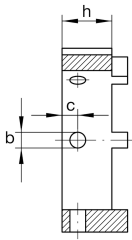
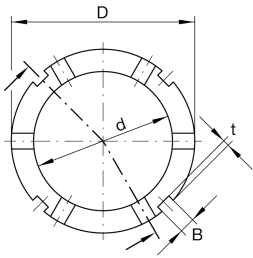
**AMS20**

Locknut socketadapter for precision locknuts AM

adapter for precision locknuts AM

Technical information**Dimensions**

D	32 mm	Outside diameter
h	14 mm	Height
d	22 mm	Bore diameter
B	4 mm	Groove width
b	4 mm	Bore diameter through hole
	H11	Bore diameter through hole fit
c	5 mm	Distance bore
t	2 mm	Groove depth
≈m	44,81 g	Weight

Additional information

AM15, AM17, AM20

Suitable nut