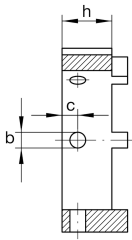
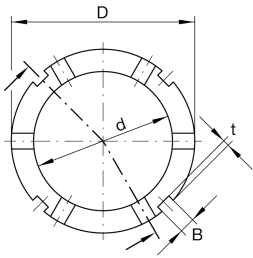
**AMS30**

Locknut socketadapter for precision locknuts AM

adapter for precision locknuts AM

Technical information**Dimensions**

| | | |
|----|-------|--------------------------------|
| D | 45 mm | Outside diameter |
| h | 15 mm | Height |
| d | 35 mm | Bore diameter |
| B | 5 mm | Groove width |
| b | 5 mm | Bore diameter through hole |
| | H11 | Bore diameter through hole fit |
| c | 5 mm | Distance bore |
| t | 2 mm | Groove depth |
| ≈m | 69 g | Weight |

Additional informationAM25, AM30,
AM35/58, AM30/65

Suitable nut