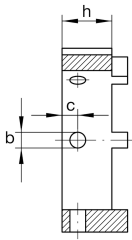
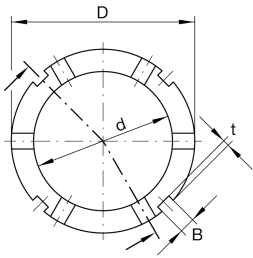


## AMS40 [↗](#)

Locknut socketadapter for precision locknuts AM

adapter for precision locknuts AM

### Technical information



#### Dimensions

D	65 mm	Outside diameter
h	16 mm	Height
d	45 mm	Bore diameter
B	6 mm	Groove width
b	6 mm	Bore diameter through hole
	H11	Bore diameter through hole fit
c	6 mm	Distance bore
t	2,5 mm	Groove depth
≈m	216 g	Weight

#### Additional information

AM35, AM40

Suitable nut