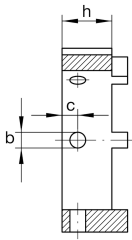
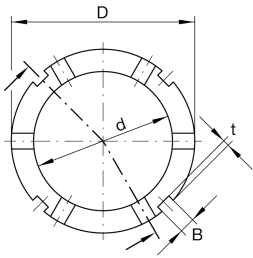


AMS50 [↗](#)

Locknut socketadapter for precision locknuts AM

adapter for precision locknuts AM

Technical information



Dimensions

D	70 mm	Outside diameter
h	19 mm	Height
d	53 mm	Bore diameter
B	6 mm	Groove width
b	6 mm	Bore diameter through hole
	H11	Bore diameter through hole fit
c	6 mm	Distance bore
t	2,5 mm	Groove depth
≈m	239 g	Weight

Additional information

AM45, AM50

Suitable nut