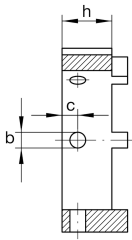
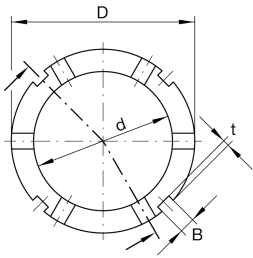
**AMS60**

Locknut socketadapter for precision locknuts AM

adapter for precision locknuts AM

**Technical information****Dimensions**

D	85 mm	Outside diameter
h	20 mm	Height
d	65 mm	Bore diameter
B	7 mm	Groove width
b	6 mm	Bore diameter through hole
	H11	Bore diameter through hole fit
c	6 mm	Distance bore
t	3 mm	Groove depth
≈m	370 g	Weight

**Additional information**

AM55, AM60

Suitable nut