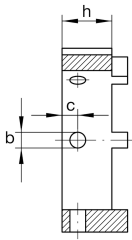
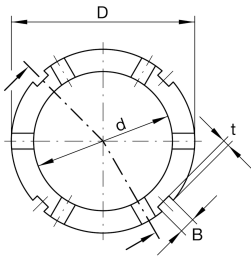
**AMS80**

Locknut socketadapter for precision locknuts AM

adapter for precision locknuts AM

Technical information**Dimensions**

D	110 mm	Outside diameter
h	25 mm	Height
d	85 mm	Bore diameter
B	8 mm	Groove width
b	8 mm	Bore diameter through hole
	H11	Bore diameter through hole fit
c	10 mm	Distance bore
t	3,5 mm	Groove depth
≈m	0,73 kg	Weight

Additional information

AM75, AM80, AM85

Suitable nut